



beamA

The trade association for energy  
infrastructure & systems

LV DISTRIBUTION AND INFRASTRUCTURE SYSTEMS

PROSPECTUS

# Welcome from the CEO

*BEAMA represents an industry at the heart of the UK's clean energy and electrification journey. Our members enable clean power in the UK and around the world. They design, manufacture and supply the technologies which decarbonise and electrify buildings and transport, whilst expanding and upgrading energy infrastructure. These technologies are fundamental to economic growth, energy security and the delivery of a low carbon future.*

*As a trade association, our role is clear: to support our members to succeed in a fast-changing and increasingly complex landscape. We bring industry together to provide a strong, credible collective voice, which we use to influence standards and turn policy ambition into practical action. We underpin this by facilitating the sharing of insight and best practice, helping to translate common challenges into shared opportunities. Through collaboration and technical expertise, we support UK manufacturing to remain competitive, resilient and relevant across both UK and EU markets.*

*This prospectus sets out how BEAMA supports its members today, while laying the foundations for long-term success. I am proud of the organisations we represent and the influential role we play in building a strong, innovative and forward-looking industry. We welcome new businesses into our growing community of members at this exciting time for our sector, and I am proud to see BEAMA at the forefront of shaping the future market for our membership.”*

**Yselkla Farmer**  
CEO



# About BEAMA



**Shaping the policy, standards and markets that enable UK electrotechnical manufacturers to compete, comply and grow.**

BEAMA is the UK manufacturing trade association for the electrotechnical sector, representing companies that design, manufacture and supply the energy infrastructure and systems critical to the UK's Net Zero and energy security ambitions.

We work at the intersection of regulation, standards and market development, providing manufacturers with early insight, technical expertise and a collective voice on product safety, performance, energy efficiency, digitalisation and sustainability. Our scope spans energy networks, electrical infrastructure and service technologies across the built environment, transport and energy sectors.

Established in 1905, BEAMA is a trusted partner to manufacturers navigating complex and fast-moving change. Through targeted forums, technical groups and market-focused initiatives, we help members anticipate regulatory developments, influence policy and standards, reduce risk, and position their businesses for long-term growth in the UK and beyond.

**Our Sector Represents:**

**90,000**

PEOPLE EMPLOYED IN THE UK

**£14 Billion**

UK TURNOVER

**£5 Billion**

EXPORTING WORLDWIDE

# Welcome from Group Chairman



*BEAMA members sit at the heart of the UK's low-voltage distribution and infrastructure sector, so we see every day how robust product standards are the foundation of safe, reliable and future-ready installations.*

*Developing these standards collaboratively with our members and key stakeholders means we can hard-wire safety and sustainability into products from the outset, rather than trying to retrofit compliance later.*

*By working closely with our supply chain, government departments and regulators, we ensure that real-world manufacturing and installation experience feeds directly into policy, so regulation is both ambitious and practical, supporting innovation, resilient supply chains and continued confidence in UK infrastructure at home and abroad.”*

**Marc Gaunt**  
Sales Director



# Our Sector

The BEAMA LV Distribution and Infrastructure systems (LDIS) group is the voice of Britain's manufacturers of Low Voltage Electrical Distribution and Infrastructure Products.

The products and solutions covered within our LDIS group are system critical for our electrical infrastructure both today and in future. They enable the safe and efficient delivery of energy to our homes, buildings and wider infrastructure.

Our experienced and active members work together to ensure the continuation and development of their products within rapidly evolving markets. This includes the importance of LV distribution and infrastructure systems as we move towards our increasing electrified society and in the application of the Building Safety Act.

Aligned to this, we have a specialised sub-group working alongside market surveillance and law enforcement authorities to have focus on eliminating unsafe and non-compliant electrical products in the UK.

Guided by BEAMA's expertise, our members feed into the development of commercially impactful standards, policy and regulation to meet the future needs of both individual businesses and the sector.



# Who is in scope?

Meet your network



We welcome manufactures of low voltage electrical distribution products which are critical for the safe and reliable distribution of electricity in domestic, commercial and industrial properties.

We cover a wide range of solutions available across these markets, including wiring accessories, modular circuit protection (including MCBs, RCDs, AFDDs, SPDs), modular control products (including timers, contactors, lighting controls), MCCBs and ACBs, HRC Fuse Links, fused switchgear, enclosure systems (including consumer units, MCB distribution boards and MCCB panelboards).



# Who we work with...

... you work with.



We work closely with a range of government bodies and key organisation across our member's horizontal and vertical supply chains to keep you informed of the policy, regulation and product standard changes which impact you.





## Our Workplan

We work to ensure development of effective industry guidance to educate and support member companies and the wider market. A key focus of our work is promoting best practice, compliance and relevant standards alongside electrical safety, covering not only product performance, but also correct installation, ongoing maintenance.

Our guidance documents and technical bulletins are developed through the collective expertise of our LDIS membership. This includes authoritative guidance on compliance with BS 7671 Wiring Building Regulations, reflecting our active role in shaping the ongoing development of this key framework for electrical installation and safety.

Alongside supporting today's supply chain, we are committed to developing the next generation of electricians through the eFIXX College Connections Programme. The skills shortage remains an acute challenge for our sector. We aim to enrich the learning journey of future electrical contractors by sharing industry expertise, raising awareness of standards and best practice, and inspiring confidence and enthusiasm to join our industry.

# How do we work?

The Who, When, What behind your membership...

GROUP

Product Management Committee

Dedicated Technology Technical Committees

FREQ

Quarterly

Quarterly with Adhoc Project work

WHO

Membership Senior Leaders

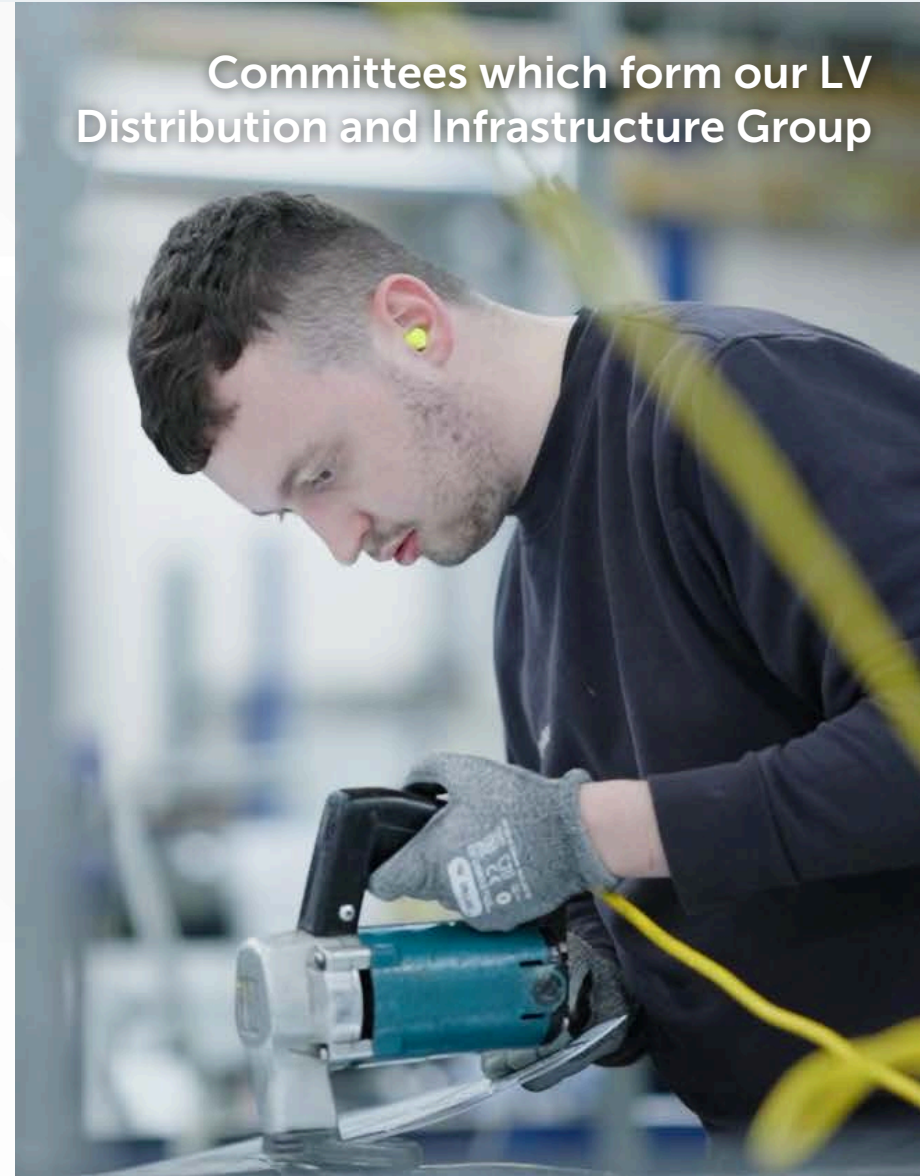
Technical Leads, Engineering Specialists, and Standards Experts

KEY THEMES AND OUTPUTS

Focused on ensuring the UK LV Distribution and Infrastructure sector is represented by innovative and high quality manufacturers working collectively to improve safety and support the supply chain and stakeholders.

Overseeing sector relevant technical work, including the continued development of BS 7671 UK Wiring Regulations, Product standards creation and development, whilst generating and maintaining guidance and CPD content. This is structured as multiple working groups consisting of experts from across the BEAMA membership where relevant.

Committees which form our LV Distribution and Infrastructure Group





# Our Market Surveillance Support Initiative (MSSI UK) Sub-Group

Eliminating unsafe and non-compliant electrical products in the UK.

LVDI Group members gain access to MSSI UK, the leading industry initiative dedicated to protecting the integrity, safety and compliance of electrical products in the UK market.

We bring together major manufacturers, with a primary (though not exclusive) focus on LVDI-related products, to collaborate with market surveillance authorities, law enforcement, customs teams and wider government stakeholders.

The emphasis is on practical, proactive action: improving the market frameworks, identification and reporting of unsafe, non-compliant and counterfeit products, strengthening outcomes, and supporting fair competition across the sector. Through consolidated reporting of unsafe and non-compliant products to national authorities, we help ensure consistent and impactful enforcement.

This collective approach not only safeguards customers, but also protects brand reputation and ensures responsible manufacturers are not undercut by non-compliant operators.

# Welcome from Group Lead



*Our LV infrastructure is core to the safety of homeowners, residents, building owners and to the delivery of electrification that supports the move to new low-carbon technologies.*

*LV product manufacturers play a critical role in this system by designing, manufacturing and supporting compliant, high-quality solutions that ensure safety, resilience and performance throughout the lifecycle of a building. Through leadership in standards, regulation and skills, our sector underpins confidence in the electrical infrastructure that enables a safer, more efficient and sustainable built environment.”*

**Nick Hayler**  
Director of Member Services &  
Head of Building Electrical Systems

Get in Touch 

# The Wider Community

When you join a group within BEAMA, you benefit from being a part of the larger association, which represents a wide range of technologies and sub-sectors, including:



Transmission and distribution equipment for the electricity grid



Smart IOT devices for buildings



Heating, hot water and ventilation products



Electrical installation products for the built environment



Storage – thermal, phase-change and battery



Electric vehicle charging infrastructure



Smart metering and metering solutions

Our Sector Represents:

**90,000**

PEOPLE EMPLOYED IN THE UK

**£14 Billion**

UK TURNOVER

**£5 Billion**

EXPORTING WORLDWIDE

# Why join the BEAMA community?

At BEAMA, we identify with the principle that a membership can provide a cost-effective way of staying in touch with activities that affect your business, whilst providing access to the sort of information and sphere of influence that is difficult to resource at Board level or through an individual appointment.

Becoming a BEAMA member instantly gives your company access to the BEAMA community. We run the organisation with a community approach at its heart; creating opportunities for networking with industry peers, opening up co-working opportunities, and sharing resources to help your company influence market defining policy, regulations or standards.



*“Being part of BEAMA means we’re not facing common challenges alone. We’re working together to shape a more resilient sector, ensuring our collective voice is heard and the industry continues to evolve with confidence.”*

**Volution Group plc**  
Ventilation Group Member

Illustrating our  
Areas of  
Influence:



**Cross industry  
collaboration to  
tackle post Brexit  
regulatory and trade  
challenges**



**Creating a smart  
systems approach  
through technical  
standardisation**



**Building markets  
for building  
controls and  
automation**



**Reforming building  
regulations to drive  
low carbon building  
technologies**



**Working with  
Ministers to drive  
grid investment**



**Market surveillance  
assistance to  
improve product  
safety for consumers**

## BEAMA Benefits

### Readily Available Insight

Reducing the time and effort required to gather and interpret information, with trusted insight to support efficient internal briefings and training across a range of applicable topics.

### Conformity and Compliance

Support to understand, interpret and apply relevant policies, regulations and standards with confidence.

### Collaboration and Networking

Facilitated opportunities to share expertise, collaborate with peers and work collectively to address common challenges, assisted by BEAMA experts.

### Policy and Standards Influence

Be a part of BEAMA's reputation and collective voice to shape the policies, regulations and standards which affect your products markets and future investment decisions.

### Informed Navigation of Change

Visibility of policy and regulatory development for proactive planning and informed decisions with operational and commercial impact.

### Wider Market Intelligence

Insight into evolving market expectations and information requests, including digitalisation, environmental performance and product safety.

# Gain value from working alongside industry peers

Working with industry peers can be vital, particularly when facing challenges that cannot be tackled effectively alone. By joining, you gain collaboration where **strength in numbers** truly matter.

**Consensus building for industry positions** that may relate to technology performance assessment, skills development or customer advice.

**Networking for projects** including, but not exclusive to, guidance development, testing and/or certification scheme frameworks or trade communication campaigns.

**Bringing aligned industries** together for advocacy strength to ensure a common voice for UK and International policy, regulatory or standardisation development work.

**Focused campaigns** which can target a range of audiences to influence their perception of a given technology sector.

**The capability to join** non-Governmental collaborative environments in which members can support or track academic or 'think tank' research and development programmes.



# Who you'll work with

Our community of Members



# Who you'll work with

Our community of Members



# What level of support can you expect from your BEAMA membership?



Specialised Support



Representation



Events and  
Resources



Services

*The support provided by BEAMA through its committees and vast resource libraries along with the services offered to all members, such as the 2050 Connected and Digitisation Hubs are extremely valuable to guide members through the ever-changing landscapes. This along with the BEAMA team lobbying Government has been pivotal in the changes that we are currently seeing in decarbonisation and safety."*

**Michael Smith** Switchgear  
Building Electricity Systems (BES) Member

# Specialised Support

## Account Management Support

Every BEAMA technology group has a dedicated 'account manager' offering expert support and advice along with the capability to manage industry projects such as the development of guidance documents.

## Bespoke company-wide presentations

Through our expert account management service, members have the opportunity to request bespoke or general company briefings on relevant topics currently being overseen by the BEAMA team. These can include on technical, policy, sustainability, and digital topics.

## Standards & Conformity Assessment Leadership

Influence the standards that shape your market. BEAMA represents members across UK, European and international standards and conformity assessment bodies, ensuring your interests are heard, requirements are understood, and emerging technologies are reflected in future regulation and standards.

## Guiding your organisation through new regulations or technical standards

Our experts at BEAMA will help guide you through changes in the marketplace that impact your business, whether that's amendments to existing technical standards and regulations, or new reporting requirements. We aim to steer you through how to apply these changes, giving you early notice ahead of publication.



***BEAMA combines technical knowledge with policy engagement to support members operating in complex and rapidly developing markets. In areas such as smart buildings and electrification, that blend of expertise helps businesses engage more confidently in regulatory discussions and align with the wider direction of travel.”***

**myenergi**

**Smart Buildings Group (SBG) Member**



# Representing Members



Facilitating networking and collaboration across sector groups



Engaging with our community about UK & International policy activity



Positioning and sector marketing support



Actively engaging in National, European and International standardisation and conformity assessment



Engaging with other supply chain organisations



Guiding our community of members through periods of industry transformation on topics of Digitalisation and Net Zero



Member projects, thought leadership, campaigns and lobbying

# Events and Resources

## Networking events

Our account management and marketing teams host networking events driven by membership needs, online and in-person. These events could be issues focused or provide a platform for speaking to, and networking with, members of market value chains.

## Bespoke and up-to-date guidance and publications

We create high-impact guidance driven by member demand, the policy landscape and future market needs. By convening our members and partnering where beneficial with cross-industry stakeholders, we deliver credible publications that support commercial decision-making, strengthen member markets, and shape policy outcomes.



# Our Services

We offer a wide range of essential services to future-proof your business:



**BEAMA 2050 Connected**



**Digitalisation Hub**



**Policy & External Affairs**



**Statistics & Economics**

# Uniting for Net Zero and Circularity

As part of membership, companies benefit from BEAMA 2050 Connected, our cross-sector platform for collaboration on Net Zero and the circular economy.

Decarbonising the value chain requires coordinated action, and 2050 Connected brings members and their supply chain together to share and collaboratively develop best practice guidance, strengthen communication and drive consistent, practical progress.

Whether a company is just starting down their sustainability journey or has a well embedded sustainability team, BEAMA 2050 Connected empowers those delivering change by helping value chains to align activity, accelerate learning and increase collective impact.

*“BEAMA 2050 Connected brings industry together to learn and agree a shared path to sustainability.”*

Amy Collins  
Head of Net Zero  
and Clean Tech



eama  
2050 Connected

Shoulder to shoulder  
for Net Zero alignment



Forming an Engaged Community

## Community Events and Learning:

Gain exclusive access to events that connect companies across the value chain, creating opportunities for collaboration, insight sharing, and mutual learning.



Supporting Informed Understanding

## BEAMA 2050 Connected Hub Access:

Benefit from access to the BEAMA 2050 Connected Hub, our central platform supporting sustainability efforts across the sector, shared learning and policy and regulatory insight.



Collaborating for Consistency

## Focused Groups and Communities:

Engage in BEAMA's Technical Sustainability Committee and working groups, where members collaborate to shape industry positions and develop guidance, standards and best practice that support the wider membership.

# Digitalisation Hub

Digitalisation presents both challenges and opportunities for the electrotechnical sector. New UK, EU and international regulations, standards and technologies are emerging to maximise benefits while protecting consumers, markets and critical infrastructure.

The Digitalisation Hub exists to empower members to shape the digital future of the electrotechnical sector - practical support, peer collaboration and tools to test, prove, and scale digital solutions.

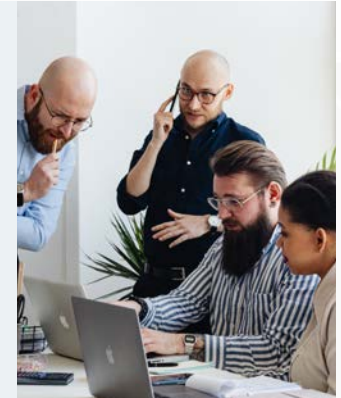


“*Our Digital Hub and Network exist to make digital transformation practical - turning standards, regulation and real-world implementation into an enabler, not a barrier, so members can move forward with confidence.*”

Patricia Massey  
Head of Digital &  
Technical Standards

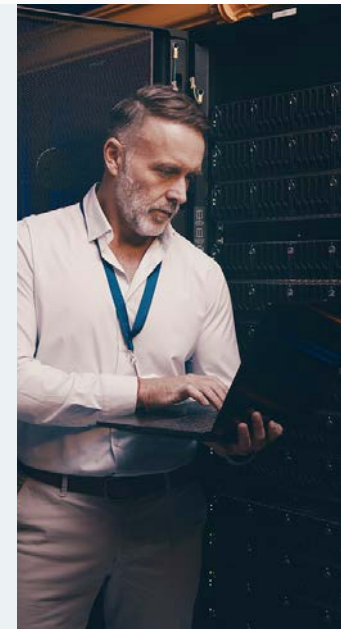
## Digital Strategy & Innovation Network (DSIN)

DSIN is BEAMA's member forum for digital transformation. It's a collaborative space where members identify shared challenges, shape coordinated industry positions and turn digital ambition into collective, practical action that protects and advances member interests.



## Digital Hub

The Hub offers practical tools and expert support - guidance on data standards, cybersecurity and data protection, AI, connected systems and Digital Product Passports, plus regular regulatory and standards updates. Members actively shape and contribute to guidance documents, workshops, case studies, newsletters and sandbox activities - testing and refining ideas before wider rollout. Backed by BEAMA's dedicated digital resource, the Hub empowers members to boost efficiency, strengthen compliance, manage risk and unlock the full potential of digitalisation together.



# Policy & External Affairs

Policy and regulation play a decisive role in shaping demand, costs and investment for BEAMA members. As a respected and established voice, BEAMA is trusted by government, regulators and Industry partners to provide expert insight on the technologies and markets we represent.

BEAMA is well known and well regarded across Whitehall, regulators and European institutions. Through longstanding relationships with Ministers, officials and key stakeholders, we ensure our members' voices are heard in the development of UK and EU policy and regulation.

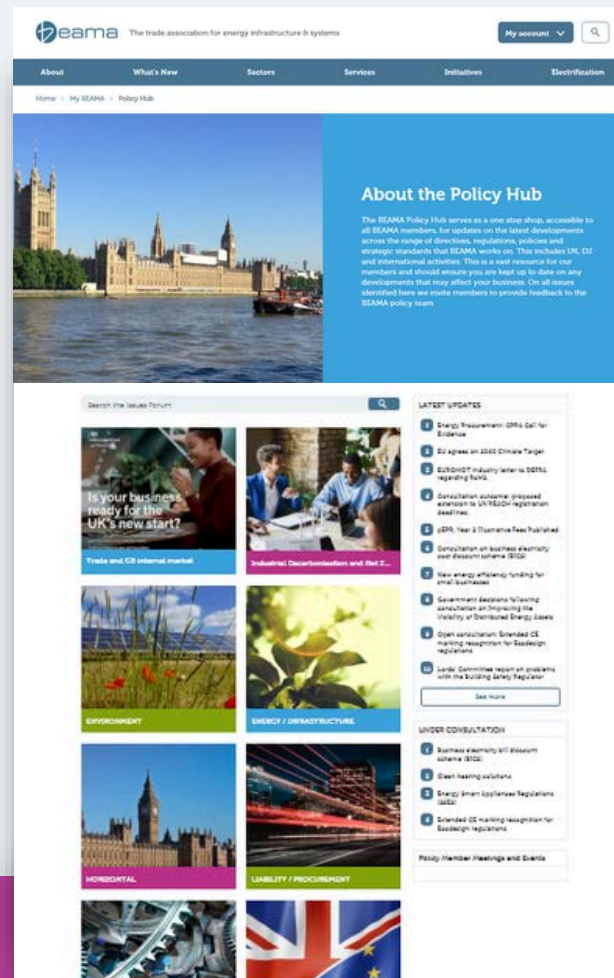
We support members by providing early notice of policy changes and advising on impacts in a variety of formats. We translate our members' commercial priorities into clear policy positions, underpinned by robust evidence, market insight and technical expertise to maximise our influence. Our partnerships, including with the Energy Systems Catapult, strengthen our ability to shape future market frameworks, support innovation and open pathways to international opportunity.

*“We alert you to the opportunities and costs of policies, and promote your views to benefit our industry.”*

Simon Harpin  
Head of Policy

## The Policy Hub and briefings

Every BEAMA member company gains their team's unrestricted access to our password protected web-based chronological library of policy and regulatory information. This enables members to receive the latest updates, recap long-running topics and track progress over time. We also provide a detailed tracker and monthly policy webinars.



Web-based resources are accessible to your entire organisation

Arrange direct training or discussions on the policy topics which matter most to your company

Meet officials and Ministers, and get preparation support before your own discussions with policy makers

# Statistics & Economics

Our Statistics & Economics function provides trusted, independent market insight to support confident decision-making and strategic planning from data across the electrical and mechanical engineering industries.

Fed by our Business Dashboard, our Market Pulse Reports draw together information from multiple sources to provide a quarterly snapshot of market conditions. These reports are valued by members as a clear reflection of market performance and trends, and by policymakers as a robust evidence base for understanding the health of the sector.

This insight saves members significant time by bringing together reliable, industry-specific data in one place, while ensuring businesses remain informed of wider economic context. Combined with short- and long-term analysis, BEAMA's statistics underpin investment decisions, support business planning and strengthen confidence in future market outlooks.



*“BEAMA’s statistics and market insight provide members with a trusted evidence base to understand market trends, inform strategic decisions and navigate an evolving economic landscape with confidence.”*

Emmanuel Amoakohene  
Head of Statistics

## BEAMA Indices Portal

An exclusive portal for our Contract Price Adjustment (CPA) service using independently sourced material, labour and transport cost data to support accurate price adjustments and escalations.

## Business Dashboard

BEAMA's digital repository that aggregates industry trends, manufacturing data, and national economic indicators to help you track market performance and inform strategic planning.



## Statistics Publications

Regular market insight reports across BEAMA product groups, tracking sales volumes and values, short- and long-term trends, forecasts and market surveillance.

## Market Pulse

Quarterly reports combining member survey data and wider industry sources to highlight key trends and indicators for growth, presented in a clear, digestible format alongside analysis of drivers and impacts.



# Additional Services

Further support available to all BEAMA Members:

## BEAMA Legal

BEAMA Legal provides expert legal, regulatory and trade policy support to manufacturers across BEAMA's sectors, helping members operate compliantly, competitively, and with confidence.

**Legal guidance** on contract law and conditions, competition, product liability, procurement, and other commercial and regulatory legal issues.

**Contract publications**, including BEAMA's own contract conditions and European legal publications to which BEAMA legal contributes via Orgalim.

**Legislative monitoring and advocacy** at UK and EU level, representing members' interests.

**Trade policy** representation in the UK and EU covering rules of origin, tariffs, customs procedures and regulatory requirements, with direct engagement with UK government.

## International Trade & Exhibition Support

Our International Trade and Exhibition Support helps members access global markets faster, cheaper, and with reduced complexity.

### Practical exhibition support

Trusted advice on freight forwarding, logistics, and exhibition stand design, so you turn presence into results.

### Market insight & visibility

We promote UK products and new technologies overseas and share intelligence on markets with the strongest growth potential.

### Everything in one place

Live opportunities, invitations, and key trade contacts hosted in the BEAMA Members Area.

## Who can we help?



New or first-time exporters



SMEs entering overseas markets



Established exporters targeting new regions

# Our Vision



A market for safe, secure, and compliant products.



A strong investment environment for electrification technologies.



A prosperous export market for our members.



A low carbon, smart and flexible energy system.

# Our Mission

**To be the first port of call** for industry, media and Government regarding the pathway to electrification for a Net Zero future.

**To provide** leadership, expertise and independent influence in the areas of Net Zero product safety, performance, energy efficiency and sustainability.

**To support member companies** in understanding how legislation, regulation and standardisation will affect their day to day business so they can invest and act appropriately.

**To lead the development of a market for sustainable products** and uphold the integrity of our industry, supporting our community of members to achieve their Net Zero corporate responsibilities and goals.

**To serve the needs of the industry** as the leading trade association by proactively developing and influencing the content of technical standards and regulation.

**To drive** and influence National, European and International standards on safety and performance and influence conformity assessment and accreditation policy.



*“We consider maintaining a BEAMA membership one of the most efficient and impactful investments we’ve made. The insight, representation, and practical support they provide deliver real value, helping us navigate change and focus our resources where they matter most.”*

Ormazabal UK  
Electricity Networks Infrastructure (ENI) Member

Ready to Compete, Comply, and Grow?

# Join Us

✉ [info@beama.org.uk](mailto:info@beama.org.uk)

🌐 [www.beama.org.uk](http://www.beama.org.uk)

🌐 @BEAMA

📍 Rotherwick House 3 Thomas  
More Street London E1W 1YZ

