



The trade association for energy
infrastructure & systems



LV SWITCHBOARD AND BUSBAR SYSTEMS

PROSPECTUS

Welcome from the CEO

BEAMA represents an industry at the heart of the UK's clean energy and electrification journey. Our members enable clean power in the UK and around the world. They design, manufacture and supply the technologies which decarbonise and electrify buildings and transport, whilst expanding and upgrading energy infrastructure. These technologies are fundamental to economic growth, energy security and the delivery of a low carbon future.

As a trade association, our role is clear: to support our members to succeed in a fast-changing and increasingly complex landscape. We bring industry together to provide a strong, credible collective voice, which we use to influence standards and turn policy ambition into practical action. We underpin this by facilitating the sharing of insight and best practice, helping to translate common challenges into shared opportunities. Through collaboration and technical expertise, we support UK manufacturing to remain competitive, resilient and relevant across both UK and EU markets.

This prospectus sets out how BEAMA supports its members today, while laying the foundations for long-term success. I am proud of the organisations we represent and the influential role we play in building a strong, innovative and forward-looking industry. We welcome new businesses into our growing community of members at this exciting time for our sector, and I am proud to see BEAMA at the forefront of shaping the future market for our membership.”

Yselkla Farmer
CEO



About BEAMA



Shaping the policy, standards and markets that enable UK electrotechnical manufacturers to compete, comply and grow.

BEAMA is the UK manufacturing trade association for the electrotechnical sector, representing companies that design, manufacture and supply the energy infrastructure and systems critical to the UK's Net Zero and energy security ambitions.

We work at the intersection of regulation, standards and market development, providing manufacturers with early insight, technical expertise and a collective voice on product safety, performance, energy efficiency, digitalisation and sustainability. Our scope spans energy networks, electrical infrastructure and service technologies across the built environment, transport and energy sectors.

Established in 1905, BEAMA is a trusted partner to manufacturers navigating complex and fast-moving change. Through targeted forums, technical groups and market-focused initiatives, we help members anticipate regulatory developments, influence policy and standards, reduce risk, and position their businesses for long-term growth in the UK and beyond.

Our Sector Represents:

90,000

PEOPLE EMPLOYED IN THE UK

£14 Billion

UK TURNOVER

£5 Billion

EXPORTING WORLDWIDE

Welcome from Group Chairman



Being a BEAMA member company aligns us with like-minded companies that are striving for a safer, more sustainable and innovative future for our relevant industry sector.

It is important to be at the forefront of industry knowledge to drive change forwards, and by aligning with other member companies with BEAMA allows this to happen and shape the way for how standards and guidance documentation are prepared.

BEAMA is the recognised trade association for our industry sector and brings a wealth of benefits to any member company. We would strongly recommend membership to all companies in the electrotechnical sector.”

Sean Smith
Managing Director



Our Sector

The BEAMA LV Switchboard and Busbar systems (LSBS) group represents and speaks for Britain's manufacturers of low voltage factor built switchboard assemblies and busbar systems.

Compliance with BS EN IEC 61439 series, these systems are essential assemblies in enabling the control and safe, consistent and reliable distribution of power to buildings and services. This includes being a core pillar to the reliable application of low carbon technologies as we transition away from fossil fuel use.

Our experienced and active members work together to ensure the continuation and development of high-quality and robust products within rapidly evolving markets, especially where electrical safety is non-negotiable.

Guided by BEAMA's expertise, our members feed into the development of the standards, policy and regulation which have commercial impact to meet the future needs of both individual businesses and the sector.



Who is in scope?

Meet your network



Our LSBS group is open to all manufacturers of low voltage factory built switchboard assemblies and busbar systems. This covers a wide range of solutions available across all markets, such as LV switchboards, panel boards, motor control centers, and busduct and busbar systems.



Who we work with...

... you work with.



We work closely with a range of government bodies and key organisation across our member's horizontal and vertical supply chains to keep you informed of the policy, regulation and product standard changes which impact you.





Our Workplan

The core of the group's activities is in the development of industry guidance, to educate and support the creation, installation and maintenance of our core product ranges. These guidance documents, and technical bulletins provide insight from leading manufacturers on best practice of installation, maintenance and aiding compliance with appropriate regulations and legislation.

SKEB (Skills, Knowledge, Experience, Competency)

We actively support the Industry Competence Steering Group (ICSG) and the development of competency frameworks to deliver safe product, installation and enhance competence and safety standards across the built environment.

Safety Campaign

We focus on educating and informing the industry of the importance of product conformity in relation to the design, build and installation of LV switchboards. In a decisive move to raise awareness and improve industry standards, We launched a new safety campaign to educate professionals on the critical importance of product conformity to BS EN IEC 61439-2 throughout the lifecycle of Low-Voltage (LV) switchboards.

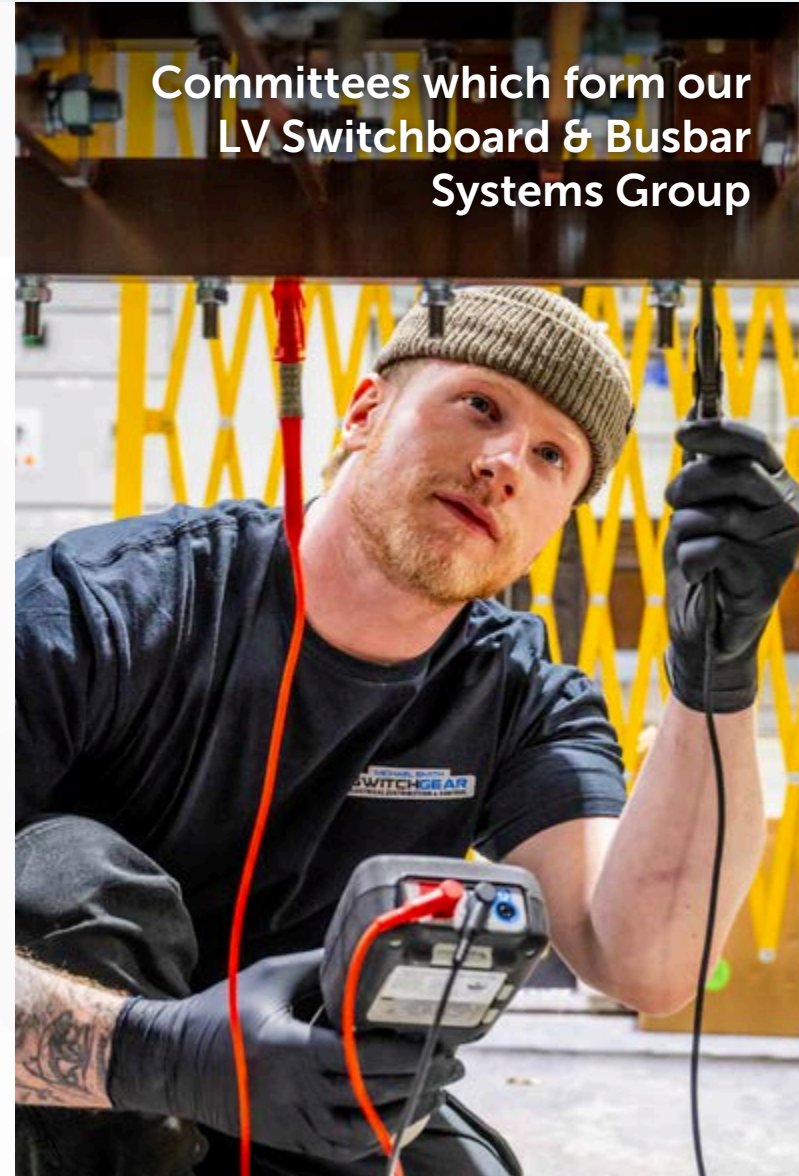
eFiXX Support

To ensure the skills for the future, we take an active role in the eFiXX college connections programme. Providing insight, guidance and support to the next generation of electrical contractors.

How do we work?

The Who, When, What behind your membership...

GROUP	Management Committee	LV Switchboard and LV Busbar Technical Committees
FREQ	Quarterly	Quarterly with Adhoc project work
WHO	Membership Senior Leaders	Technical Leads, Engineering Specialists, and Standards Experts
KEY THEMES AND OUTPUTS	<p>Focused on ensuring the UK LV Switchboard and Busbar Systems market is represented by quality manufacturers working together to better the industry and support their supply chain and external stakeholders.</p>	<p>Overseeing sector relevant technical work, including standards creation and development, whilst generating and maintaining guidance and CPD content. This is structured as multiple working groups consisting of experts from across the BEAMA membership where relevant.</p>



Committees which form our LV Switchboard & Busbar Systems Group

Welcome from Group Lead



Our LV switchboard infrastructure is core to the safety of residents and building owners, and to the delivery of electrification that supports the move to new low-carbon technologies. LV switchboard manufacturers play a critical role by designing and delivering compliant, high-quality assemblies that ensure safety, resilience and reliable performance throughout the lifecycle of a building.”

Nick Hayler
Director of Member Services &
Head of Building Electrical Systems

[Get in Touch](#) 

The Wider Community

When you join a group within BEAMA, you benefit from being a part of the larger association, which represents a wide range of technologies and sub-sectors, including:



Transmission and distribution equipment for the electricity grid



Smart IOT devices for buildings



Heating, hot water and ventilation products



Electrical installation products for the built environment



Storage – thermal, phase-change and battery



Electric vehicle charging infrastructure



Smart metering and metering solutions

Our Sector Represents:

90,000

PEOPLE EMPLOYED IN THE UK

£14 Billion

UK TURNOVER


£5 Billion

EXPORTING WORLDWIDE

Why join the BEAMA community?

At BEAMA, we identify with the principle that a membership can provide a cost-effective way of staying in touch with activities that affect your business, whilst providing access to the sort of information and sphere of influence that is difficult to resource at Board level or through an individual appointment.

Becoming a BEAMA member instantly gives your company access to the BEAMA community. We run the organisation with a community approach at its heart; creating opportunities for networking with industry peers, opening up co-working opportunities, and sharing resources to help your company influence market defining policy, regulations or standards.



Being part of BEAMA means we're not facing common challenges alone. We're working together to shape a more resilient sector, ensuring our collective voice is heard and the industry continues to evolve with confidence."

Volution Group plc
Ventilation Group Member

Illustrating our
Areas of
Influence:



**Cross industry
collaboration to
tackle post Brexit
regulatory and trade
challenges**



**Creating a smart
systems approach
through technical
standardisation**



**Building markets
for building
controls and
automation**



**Reforming building
regulations to drive
low carbon building
technologies**



**Working with
Ministers to drive
grid investment**



**Market surveillance
assistance to
improve product
safety for consumers**

BEAMA Benefits

Readily Available Insight

Reducing the time and effort required to gather and interpret information, with trusted insight to support efficient internal briefings and training across a range of applicable topics.

Conformity and Compliance

Support to understand, interpret and apply relevant policies, regulations and standards with confidence.

Collaboration and Networking

Facilitated opportunities to share expertise, collaborate with peers and work collectively to address common challenges, assisted by BEAMA experts.

Policy and Standards Influence

Be a part of BEAMA's reputation and collective voice to shape the policies, regulations and standards which affect your products markets and future investment decisions.

Informed Navigation of Change

Visibility of policy and regulatory development for proactive planning and informed decisions with operational and commercial impact.

Wider Market Intelligence

Insight into evolving market expectations and information requests, including digitalisation, environmental performance and product safety.

Gain value from working alongside industry peers

Working with industry peers can be vital, particularly when facing challenges that cannot be tackled effectively alone. By joining, you gain collaboration where **strength in numbers** truly matter.

Consensus building for industry positions that may relate to technology performance assessment, skills development or customer advice.

Networking for projects including, but not exclusive to, guidance development, testing and/or certification scheme frameworks or trade communication campaigns.

Bringing aligned industries together for advocacy strength to ensure a common voice for UK and International policy, regulatory or standardisation development work.

Focused campaigns which can target a range of audiences to influence their perception of a given technology sector.

The capability to join non-Governmental collaborative environments in which members can support or track academic or 'think tank' research and development programmes.



Who you'll work with

Our community of Members



Who you'll work with

Our community of Members



What level of support can you expect from your BEAMA membership?



Specialised Support



Representation



Events and
Resources



Services

The support provided by BEAMA through its committees and vast resource libraries along with the services offered to all members, such as the 2050 Connected and Digitisation Hubs are extremely valuable to guide members through the ever-changing landscapes. This along with the BEAMA team lobbying Government has been pivotal in the changes that we are currently seeing in decarbonisation and safety."

Michael Smith Switchgear
Building Electricity Systems (BES) Member

Specialised Support

Account Management Support

Every BEAMA technology group has a dedicated 'account manager' offering expert support and advice along with the capability to manage industry projects such as the development of guidance documents.

Bespoke company-wide presentations

Through our expert account management service, members have the opportunity to request bespoke or general company briefings on relevant topics currently being overseen by the BEAMA team. These can include on technical, policy, sustainability, and digital topics.

Standards & Conformity Assessment Leadership

Influence the standards that shape your market. BEAMA represents members across UK, European and international standards and conformity assessment bodies, ensuring your interests are heard, requirements are understood, and emerging technologies are reflected in future regulation and standards.

Guiding your organisation through new regulations or technical standards

Our experts at BEAMA will help guide you through changes in the marketplace that impact your business, whether that's amendments to existing technical standards and regulations, or new reporting requirements. We aim to steer you through how to apply these changes, giving you early notice ahead of publication.



BEAMA combines technical knowledge with policy engagement to support members operating in complex and rapidly developing markets. In areas such as smart buildings and electrification, that blend of expertise helps businesses engage more confidently in regulatory discussions and align with the wider direction of travel.

myenergi

Smart Buildings Group (SBG) Member



Representing Members



Facilitating networking and collaboration across sector groups



Engaging with our community about UK & International policy activity



Positioning and sector marketing support



Actively engaging in National, European and International standardisation and conformity assessment



Engaging with other supply chain organisations



Member projects, thought leadership, campaigns and lobbying



Guiding our community of members through periods of industry transformation on topics of Digitalisation and Net Zero

Events and Resources

Networking events

Our account management and marketing teams host networking events driven by membership needs, online and in-person. These events could be issues focused or provide a platform for speaking to, and networking with, members of market value chains.

Bespoke and up-to-date guidance and publications

We create high-impact guidance driven by member demand, the policy landscape and future market needs. By convening our members and partnering where beneficial with cross-industry stakeholders, we deliver credible publications that support commercial decision-making, strengthen member markets, and shape policy outcomes.



Our Services

We offer a wide range of essential services to future-proof your business:



BEAMA 2050 Connected



Digitalisation Hub



Policy & External Affairs



Statistics & Economics

Uniting for Net Zero and Circularity

As part of membership, companies benefit from BEAMA 2050 Connected, our cross-sector platform for collaboration on Net Zero and the circular economy.

Decarbonising the value chain requires coordinated action, and 2050 Connected brings members and their supply chain together to share and collaboratively develop best practice guidance, strengthen communication and drive consistent, practical progress.

Whether a company is just starting down their sustainability journey or has a well embedded sustainability team, BEAMA 2050 Connected empowers those delivering change by helping value chains to align activity, accelerate learning and increase collective impact.

“BEAMA 2050 Connected brings industry together to learn and agree a shared path to sustainability.”

Amy Collins
Head of Net Zero
and Clean Tech



eama
2050 Connected

Shoulder to shoulder
for Net Zero alignment



Forming an Engaged Community

Community Events and Learning:

Gain exclusive access to events that connect companies across the value chain, creating opportunities for collaboration, insight sharing, and mutual learning.



Supporting Informed Understanding

BEAMA 2050 Connected Hub Access:

Benefit from access to the BEAMA 2050 Connected Hub, our central platform supporting sustainability efforts across the sector, shared learning and policy and regulatory insight.



Collaborating for Consistency

Focused Groups and Communities:

Engage in BEAMA's Technical Sustainability Committee and working groups, where members collaborate to shape industry positions and develop guidance, standards and best practice that support the wider membership.

Digitalisation Hub

Digitalisation presents both challenges and opportunities for the electrotechnical sector. New UK, EU and international regulations, standards and technologies are emerging to maximise benefits while protecting consumers, markets and critical infrastructure.

The Digitalisation Hub exists to empower members to shape the digital future of the electrotechnical sector - practical support, peer collaboration and tools to test, prove, and scale digital solutions.

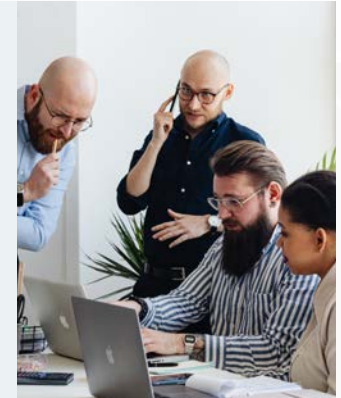


“*Our Digital Hub and Network exist to make digital transformation practical - turning standards, regulation and real-world implementation into an enabler, not a barrier, so members can move forward with confidence.*”

Patricia Massey
Head of Digital &
Technical Standards

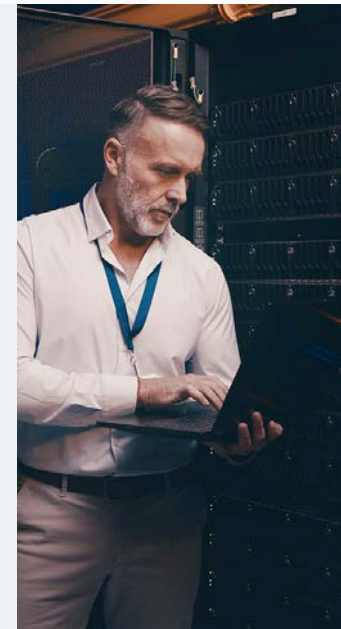
Digital Strategy & Innovation Network (DSIN)

DSIN is BEAMA's member forum for digital transformation. It's a collaborative space where members identify shared challenges, shape coordinated industry positions and turn digital ambition into collective, practical action that protects and advances member interests.



Digital Hub

The Hub offers practical tools and expert support - guidance on data standards, cybersecurity and data protection, AI, connected systems and Digital Product Passports, plus regular regulatory and standards updates. Members actively shape and contribute to guidance documents, workshops, case studies, newsletters and sandbox activities - testing and refining ideas before wider rollout. Backed by BEAMA's dedicated digital resource, the Hub empowers members to boost efficiency, strengthen compliance, manage risk and unlock the full potential of digitalisation together.



Policy & External Affairs

Policy and regulation play a decisive role in shaping demand, costs and investment for BEAMA members. As a respected and established voice, BEAMA is trusted by government, regulators and Industry partners to provide expert insight on the technologies and markets we represent.

BEAMA is well known and well regarded across Whitehall, regulators and European institutions. Through longstanding relationships with Ministers, officials and key stakeholders, we ensure our members' voices are heard in the development of UK and EU policy and regulation.

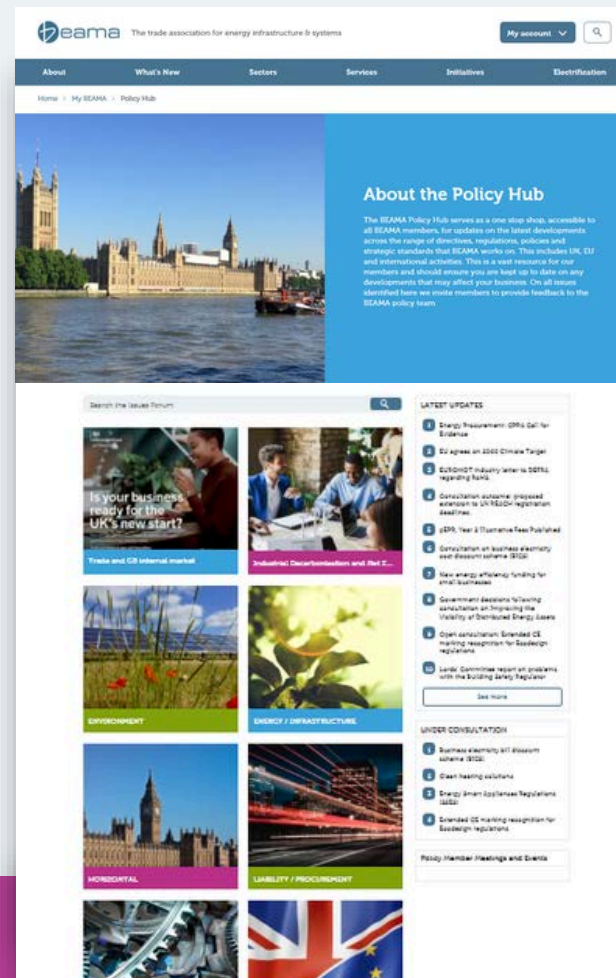
We support members by providing early notice of policy changes and advising on impacts in a variety of formats. We translate our members' commercial priorities into clear policy positions, underpinned by robust evidence, market insight and technical expertise to maximise our influence. Our partnerships, including with the Energy Systems Catapult, strengthen our ability to shape future market frameworks, support innovation and open pathways to international opportunity.

“We alert you to the opportunities and costs of policies, and promote your views to benefit our industry.”

Simon Harpin
Head of Policy

The Policy Hub and briefings

Every BEAMA member company gains their team's unrestricted access to our password protected web-based chronological library of policy and regulatory information. This enables members to receive the latest updates, recap long-running topics and track progress over time. We also provide a detailed tracker and monthly policy webinars.



Web-based resources are accessible to your entire organisation

Arrange direct training or discussions on the policy topics which matter most to your company

Meet officials and Ministers, and get preparation support before your own discussions with policy makers

Statistics & Economics

Our Statistics & Economics function provides trusted, independent market insight to support confident decision-making and strategic planning from data across the electrical and mechanical engineering industries.

Fed by our Business Dashboard, our Market Pulse Reports draw together information from multiple sources to provide a quarterly snapshot of market conditions. These reports are valued by members as a clear reflection of market performance and trends, and by policymakers as a robust evidence base for understanding the health of the sector.

This insight saves members significant time by bringing together reliable, industry-specific data in one place, while ensuring businesses remain informed of wider economic context. Combined with short- and long-term analysis, BEAMA's statistics underpin investment decisions, support business planning and strengthen confidence in future market outlooks.



“BEAMA’s statistics and market insight provide members with a trusted evidence base to understand market trends, inform strategic decisions and navigate an evolving economic landscape with confidence.”

Emmanuel Amoakohene
Head of Statistics

BEAMA Indices Portal

An exclusive portal for our Contract Price Adjustment (CPA) service using independently sourced material, labour and transport cost data to support accurate price adjustments and escalations.

Business Dashboard

BEAMA's digital repository that aggregates industry trends, manufacturing data, and national economic indicators to help you track market performance and inform strategic planning.



Statistics Publications

Regular market insight reports across BEAMA product groups, tracking sales volumes and values, short- and long-term trends, forecasts and market surveillance.

Market Pulse

Quarterly reports combining member survey data and wider industry sources to highlight key trends and indicators for growth, presented in a clear, digestible format alongside analysis of drivers and impacts.



Additional Services

Further support available to all BEAMA Members:

BEAMA Legal

BEAMA Legal provides expert legal, regulatory and trade policy support to manufacturers across BEAMA's sectors, helping members operate compliantly, competitively, and with confidence.

Legal guidance on contract law and conditions, competition, product liability, procurement, and other commercial and regulatory legal issues.

Contract publications, including BEAMA's own contract conditions and European legal publications to which BEAMA legal contributes via Orgalim.

Legislative monitoring and advocacy at UK and EU level, representing members' interests.

Trade policy representation in the UK and EU covering rules of origin, tariffs, customs procedures and regulatory requirements, with direct engagement with UK government.

International Trade & Exhibition Support

Our International Trade and Exhibition Support helps members access global markets faster, cheaper, and with reduced complexity.

Practical exhibition support

Trusted advice on freight forwarding, logistics, and exhibition stand design, so you turn presence into results.

Market insight & visibility

We promote UK products and new technologies overseas and share intelligence on markets with the strongest growth potential.

Everything in one place

Live opportunities, invitations, and key trade contacts hosted in the BEAMA Members Area.

Who can we help?



New or first-time exporters



SMEs entering overseas markets



Established exporters targeting new regions

Our Vision



A market for safe, secure, and compliant products.



A strong investment environment for electrification technologies.



A prosperous export market for our members.



A low carbon, smart and flexible energy system.

Our Mission



To be the first port of call for industry, media and Government regarding the pathway to electrification for a Net Zero future.

To provide leadership, expertise and independent influence in the areas of Net Zero product safety, performance, energy efficiency and sustainability.

To support member companies in understanding how legislation, regulation and standardisation will affect their day to day business so they can invest and act appropriately.

To lead the development of a market for sustainable products and uphold the integrity of our industry, supporting our community of members to achieve their Net Zero corporate responsibilities and goals.

To serve the needs of the industry as the leading trade association by proactively developing and influencing the content of technical standards and regulation.

To drive and influence National, European and International standards on safety and performance and influence conformity assessment and accreditation policy.



“We consider maintaining a BEAMA membership one of the most efficient and impactful investments we’ve made. The insight, representation, and practical support they provide deliver real value, helping us navigate change and focus our resources where they matter most.”

Ormazabal UK
Electricity Networks Infrastructure (ENI) Member

Ready to Compete, Comply, and Grow?

Join Us

✉ info@beama.org.uk

🌐 www.beama.org.uk

🌐 @BEAMA

📍 Rotherwick House 3 Thomas
More Street London E1W 1YZ