



eama
2050 Connected

Shoulder to shoulder
for Net Zero alignment

A Year of Action:

BEAMA 2050 Connected Workplan 2025/26

Driving collaboration for our sustainable future





eama | Shoulder to shoulder
2050 Connected | for Net Zero alignment



BEAMA **2050 Connected** Your not-for-profit subscription service

Uniting the manufacturing, energy, and built environment sectors to drive business decarbonisation and circularity through supply chain collaboration.



eama | Shoulder to shoulder
2050 Connected | for Net Zero alignment

Our Focus for FY 2025/26

BEAMA 2050 Connected is expanding its reach and impact to accelerate progress on business decarbonisation and circularity. Our focus includes:

- ❖ **Opening the subscription** to foster broader collaboration.
- ❖ **Enhancing hub support** to build on foundation-level knowledge.
- ❖ **Strengthening connections** across the supply chain and market.
- ❖ **Developing proactive solutions** to shared challenges.
- ❖ **Leveraging political momentum** on circularity and industrial decarbonisation.



"As BEAMA 2050 Connected expands, our goal is to unite and support more companies with the understanding and connections needed to tackle business decarbonisation and circularity. This is about sharing knowledge and resources to meet our shared goals, together."

Yselkla Farmer, CEO at BEAMA



eama | Shoulder to shoulder
2050 Connected | for Net Zero alignment



“Our workplan provides a clear path forward, uniting subscribers around shared sustainability-related goals. Whether you're a company just starting your journey or have seasoned experience, we ensure you receive value from accessing the subscription”

Amy Collins, Head of Net Zero & Clean Tech at BEAMA

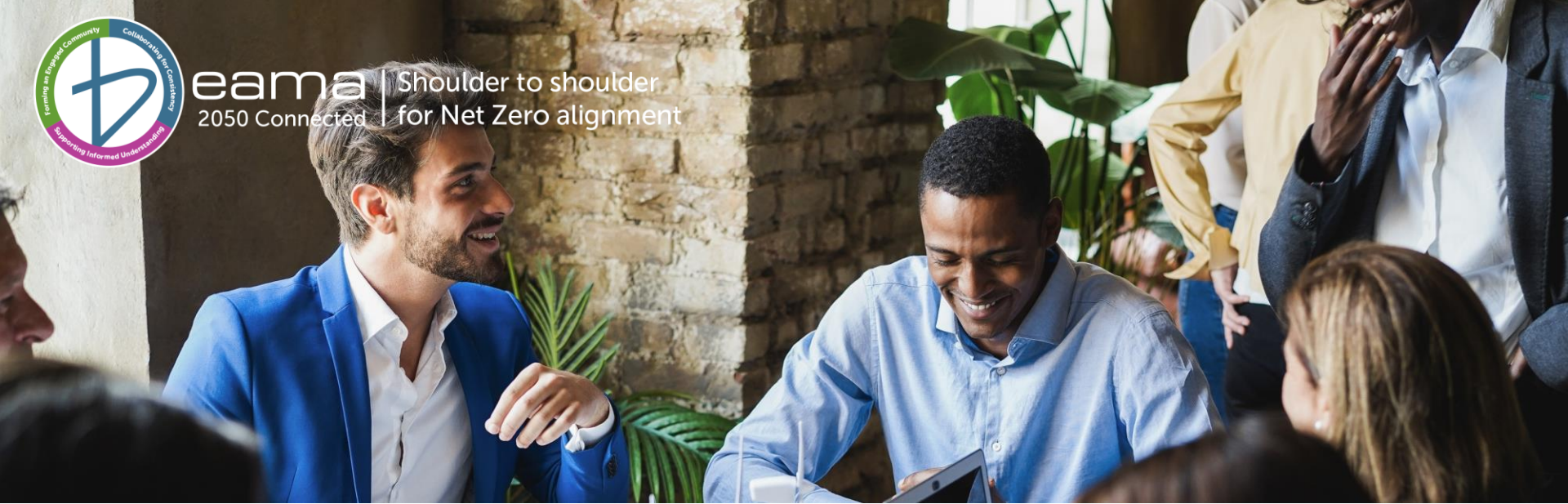
Our Workplan for 2025/26

We are committed to building awareness and driving progress across five key pillars, ensuring value for companies at every stage of their sustainability journey:

- ❖ **Policy:** Shaping the policy landscape to support our sectors.
- ❖ **Learn:** Expanding knowledge and sharing insights to inform subscribers.
- ❖ **Community:** Strengthening connections across industries to foster collaboration.
- ❖ **Action:** Developing proactive solutions and delivering real-world impact.
- ❖ **Awareness:** Keeping all employees informed.



eama | Shoulder to shoulder
2050 Connected | for Net Zero alignment



Policy: Shaping the Policy Landscape to Support Our Sectors

Our *Policy* pillar anticipates growing EU and UK policy focus on business decarbonisation and the circular economy in FY 2025/26.

By expanding BEAMA 2050 Connected, we can offer policymakers a unique and comprehensive perspective, using established and new connections to propose real-world solutions to create supportive policy.

A crucial aspect of this will be providing real data from businesses to evidence our position.

Key Policy Workplan Goals:

- ❖ **Strengthening relationships:** Amplifying our collective voice and engaging directly with policy-makers.
- ❖ **Providing policy updates:** Delivering clear and concise summaries that save our subscribers time and empower them to stay informed.
- ❖ **Building a data-driven policy strategy:** Collecting valuable data from subscribers to inform and shape policy discussions.



eama
2050 Connected

Shoulder to shoulder
for Net Zero alignment

Strengthening Relationships and Amplifying Our Voice

BEAMA 2050 Connected will focus on two central strategies:

❖ Engaging Policymakers

Hosting uniquely focused meetings, roundtables, and forums to bring policymakers and B2050C companies together for open dialogue.

Offering tailored policy and update briefings that highlight key insights and opportunities for collaboration.

❖ Building a Collective Voice

With opportunities, where relevant, for companies to shape unified BEAMA 2050 Connected positions to present industry-wide recommendations.





Expected UK Policy Examples

A selection of key relevant policies expected in 2025/26. This is not an exhaustive list and is UK only.



UK

- ❖ **Sustainability Disclosure Requirements Consultation**
BEAMA 2050 Connected response and Government engagement.
- ❖ **Transition Plans Consultation**
BEAMA 2050 Connected response and supportive resources for companies.
- ❖ **Industrial Strategy Review**
Government engagement on relevant BEAMA 2050 Connected topics.
- ❖ **Voluntary Carbon Markets Review**
Government engagement, where necessary, with supportive resource for companies.



Our Policy Roadmap Report

Ahead of our 2025/26 policy engagement, we've launched a report outlining our stance on industrial decarbonisation policy to guide our advocacy.

[Read the report here.](#)



eama
2050 Connected

Shoulder to shoulder
for Net Zero alignment

Learn: Supporting Your Decarbonisation and Circular Economy Journey

Our *Learn* pillar equips subscribers with the knowledge to progress on their sustainability journey.

The BEAMA 2050 Connected Hub is central to this, offering toolkit pages on business decarbonisation and circular economy strategies.

In 2025/26, we will expand our existing resources - including embodied carbon, the CSRD and emission scopes - with six new toolkit pages, released in three phases over the year. Additional toolkit pages may also be released as needed.

The Hub will continue to evolve, providing up-to-date information and case studies to support your journey at any stage.



eama | Shoulder to shoulder
2050 Connected | for Net Zero alignment

Showcase Your Sustainability Leadership

Are you already advanced in your sustainability efforts?

The *Learn* pillar offers exclusive opportunities for subscribers to:

- ❖ Connect supply chains and showcase best practices, including in BEAMA 2050 Connected consultation responses.
- ❖ Share your progress - as much or as little as you wish - through the detailed frameworks of our toolkits.
- ❖ Promote your achievements to inspire others and strengthen industry collaboration on BEAMA's LinkedIn.

Being part of the BEAMA 2050 Connected network celebrates and amplifies your contributions to sustainability.





eama | Shoulder to shoulder
2050 Connected | for Net Zero alignment

Business Decarbonisation Toolkits

- ❖ **April - July: Emissions Reporting**
Information on mandatory and voluntary emissions reporting, including a downloadable spreadsheet for emissions data collection.
- ❖ **August - November: Offsetting**
Resources covering the various types of offsets and relevant standards and certifications, with case studies and expert-led webinars.
- ❖ **December - March: Upstream Supply Chain Engagement**
Guidance and tips on Scope 3 emissions, including a collaborative created template letter to engage your supply chain.





eama | Shoulder to shoulder
2050 Connected | for Net Zero alignment



Circular Economy Toolkits

❖ April - July: Business Models

Information and analysis on circular economy business models, including focused information on product-as-a-service.

❖ August - November: Barriers and Challenges

Identifying barriers to circularity and giving tips on overcoming these, covering financial and non-financial challenges.

❖ December - March: Utilising Recycled Content

Guidance and insight into navigating relevant regulations and incorporating or utilising recycled content in your product or project.



eama
2050 Connected

Shoulder to shoulder
for Net Zero alignment



Community: Strengthening connections across industries to foster collaboration

Our Community pillar prioritises meaningful engagement and collaboration across the supply chain and market.

In FY 2025/26, we will host three dedicated in-person events: the 2050 Connected Conference and two Green Connect networks, supported where required by additional workshops or roundtables. These events will create valuable opportunities for direct interaction between companies, fostering partnerships and driving collective progress.

Key in-person events:

- ❖ **2050 Connected Conference (1st & 2nd July 2025):** Partnering with The LIA to unite manufacturers, policymakers, and market leaders to drive collaboration, tackle regulatory challenges, and advance supply chain decarbonisation towards Net Zero and circularity goals.
- ❖ **Green Connect (October & January):** In-person networking to accelerate decarbonisation and the circular economy through collaboration, insights, and meaningful connections.



eama
2050 Connected

Shoulder to shoulder
for Net Zero alignment

Action: Developing proactive solutions and delivering real-world impact

Our *Action* pillar brings together cross-sector task and finish groups and technical sub-groups to tackle common challenges in business decarbonisation, circularity, and sustainability.

These groups combine expertise from across sectors to develop tangible, actionable solutions, such as guidance documents, toolkits, or best practice frameworks, delivering real value and strengthening alignment across the supply chain and market.

Participating in these groups is ideal for companies further along in their sustainability journey, addressing specific gaps and accelerating progress. All subscribing companies can access the outputs, and subscribers are encouraged to actively contribute, driving meaningful, aligned progress towards a sustainable, low-carbon future.



Task and Finish Groups: Delivering Cross-Market Solutions

BEAMA Task and Finish (T&F) Groups are designed to address key sustainability challenges and opportunities with focused, short-term outputs delivered within 6 to 12 months. These outputs are typically communication, education or training based, ensuring timely and actionable results that provide value across markets.



Our Next T&F Group

❖ **General Sustainability Awareness Training for both the workforce and suppliers**

This initiative aims to support companies with internal training resources, building a foundation for long-term sustainability success.



Previous T&F Group Success: The Product Carbon Initiative

The Product Carbon Initiative brought together businesses who would not normally collaborate to tackle embodied carbon in the built environment, leveraging expertise for faster, impactful sustainability progress.

[View The Product Carbon Initiative](#)

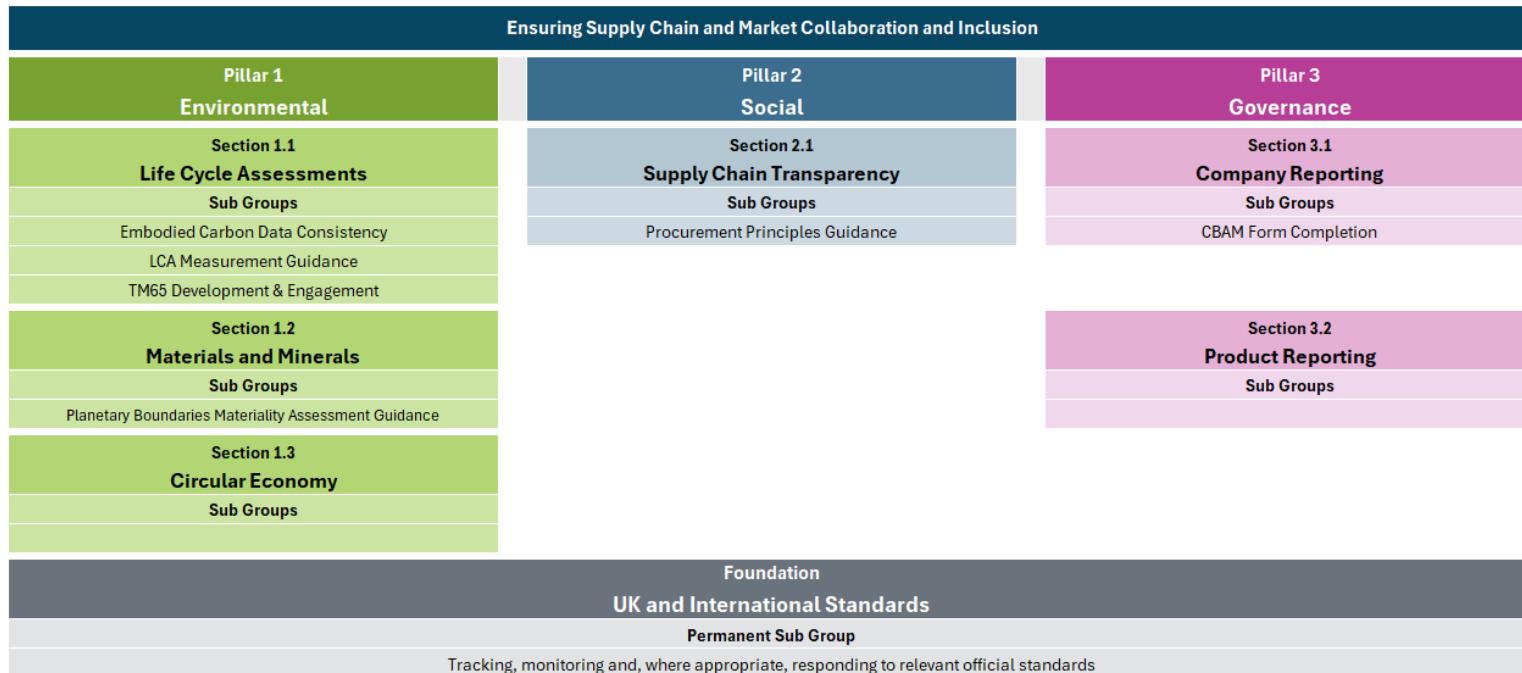


Technical Sustainability Committee (TeSC): Shaping Cross-Market Solutions and Guidance

The Technical Sustainability Committee (TeSC) addresses cross-market technical gaps in practice and guidance, with no set timeframe.

A TeSC Steering Group identifies key challenges, guiding the focus of its sub-groups. While Steering Group participation is limited, all companies can contribute to sub-group pillars, shaping impactful sustainability progress.

Sustainable Development Goals



TeSC sub-groups are established and reviewed under key pillars. This diagram illustrates the current sub-groups, which will expand over time.

These groups not only support companies but also play a crucial role in providing valuable feedback to the Government, fostering stronger relationships.





Awareness: Keeping All Employees Informed

With our final *Awareness* pillar, our goal is to enhance the day-to-day value of BEAMA 2050 Connected by ensuring subscriber companies are informed of key activities and updates.

We provide digestible, concise updates on all activity produced. These updates are available to all employees within a subscribing company and are delivered through a variety of channels, ensuring timely and accessible communication for all.

Main Communication Activities:

- ❖ **Monthly Mailings:** Communicating key updates to subscribers, with unlimited sign ups with a subscribing company.
- ❖ **Green Connect Forum:** Quarterly online briefing sessions with political updates and third-party speakers on hot topics.
- ❖ **LinkedIn Awareness:** Promoting regular updates and activities directly to companies.



eama
2050 Connected

Shoulder to shoulder
for Net Zero alignment

Take the next step towards an aligned and sustainable future - Subscribe to BEAMA 2050 Connected and be part of the change in FY 2025/26.

Be Part of Real Change

✉ 2050Connected@beama.org.uk

🌐 [BEAMA 2050 Connected](#)

