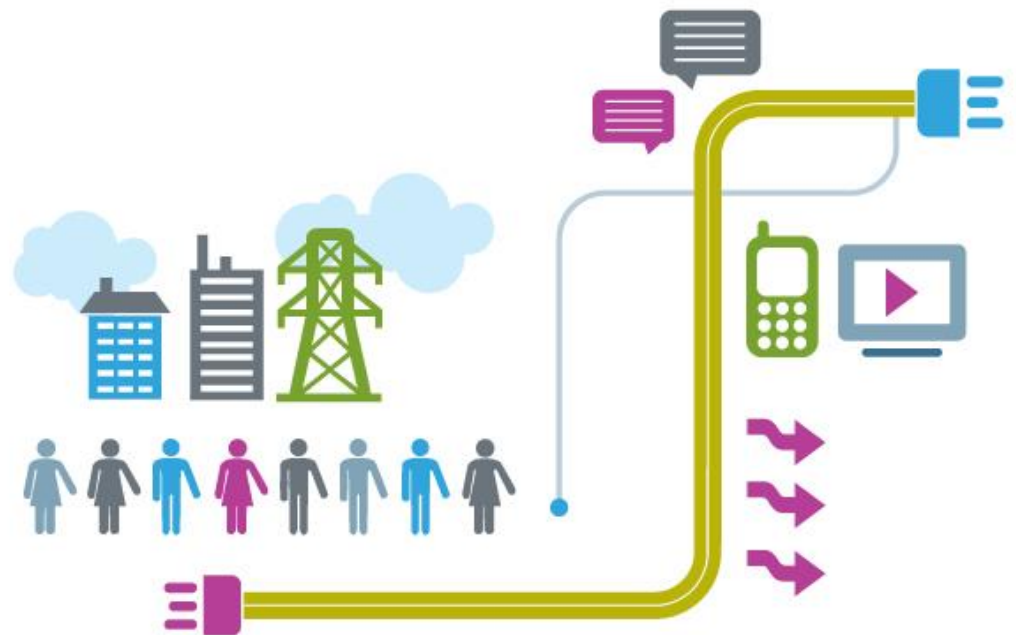


AD HOC ALL MEMBER POLICY MEETING

FUTURE HOMES STANDARDS AND HOME ENERGY MODEL

14th March 2023



The FHBS and HEM Consultations

- [Future Homes and Buildings Standard and HEM: 2023 consultations](#)
 - Dedicated campaign page: Blogs, draft responses and webinar recordings
- Three separate consultations:
 1. [Future Homes and Buildings Standards Consultation](#)
 2. [Home Energy Model: Replacement for the Standard Assessment Procedure \(SAP\)](#)
 3. [Home Energy Model: Future Homes Standard Assessment](#)



- Consultations now close on **Wednesday 27th March.**
 - Extended from 7th March, giving a three-week extension.
 - Applies to all three FHS/HEM consultations.
- Reason: Issues with HEM consultation tool.
 - Specific model fault with PV...
 - ...but many other HEM-related issues remain
- We requested extension earlier in process.
- Government response date after closure: Unknown.



We support the move to the Future Homes Standards and to the Home Energy Model.

However, the Home Energy Model does not allow for informed understanding of the specification impact of the Future Homes Standard proposal and we are concerned about the lack of formal consultation plans for key changes to the PCDB and SAP Appendix Q.





V2 BEAMA Response

[V2 of our draft responses online](#) for member comments.

Looking for comments by the 22nd March.

Letter to SoS

Asking for ministerial intervention based on our concerns.

Joint trade association letter with HHIC, FETA, TSUK, HPA and ADE.

Technical HEM Workshops

Over the coming months with DESNZ and the BRE.

Joint trade association sessions with FETA and HHIC.

- Key areas being reviewed include:
 - Heat Battery treatment with controls, extension to hot water - transparency
 - MVHR infiltration and defaults vs PCDB plus ACH calculation
 - Hot Water calculations - explore the legionella requirement which DLUHC have stated are not a requirement
 - Resistive heating calculation (further exploration)
 - Further flexibility exploration, PEF and ToU limitations
 - IP protection
- There may be additional areas added for HHIC and FETA (HPA)



Storage, Ventilation and Controls

- MVHR in the notional building presents issues with compliance.
- Hot water performance edging towards consensus Fuel switching Part L - We are trying to work on flexibility enabled as a route.
- Difficult to choose option 1 or 2.
 - However, discussion with DLUHC suggests choosing an option is less important than the commentary we give in the FHS Q8.
- We have consensus that the PEF is too blunt and needs nuance.



- Status:
 - Heat Pumps
 - Electric resistance heating
 - Electric Hot water
 - Underfloor heating



HEM Modelling Results

Specification	Notional	TER	DER	Pass/Fail	TPER	DPER	Pass/Fail	TFEE	DFEE	Pass/Fail
Panel heaters, hot water heat pumps, cMEV	Option 1	1.181	1.333	Fail	39.263	30.454	Pass	16.094	16.425	Fail
	Option 2	2.267		Pass	51.8		Pass	17.714		Pass

Specification	Notional	TER	DER	Pass/Fail	TPER	DPER	Pass/Fail	TFEE	DFEE	Pass/Fail
HHR storage heaters, instantaneous hot water, cMEV	Option 1	1.249	2.383	Fail	40.823	54.451	Fail	16.094	16.425	Fail
	Option 2	2.342	2.317	Pass	53.504		Pass	17.714		Pass

Specification	Notional	TER	DER	Pass/Fail	TPER	DPER	Pass/Fail	TFEE	DFEE	Pass/Fail
HHR storage heaters, hot water heat pumps, cMEV	Option 1	1.181	1.314	Fail	39.258	30.023	Pass	16.094	16.425	Fail
	Option 2	2.267		Pass	51.796		Pass	17.714		Pass

Have you completed HEM modelling

Which you are happy to tell us now during this AMPM by raising your hand, or which you could send to your Group Lead?

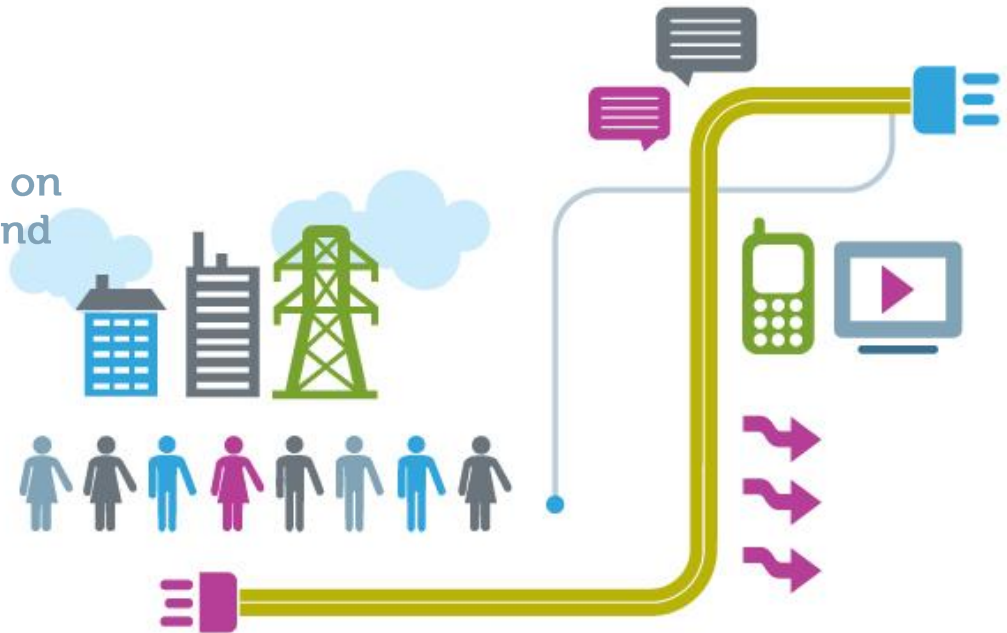


- **Two areas to consider:**
 - Installation of smart meters in new buildings – we argue there needs to be stronger instructions to ensure IHDs get passed onto customers
 - Use of smart meters to assess the energy performance of buildings against HEM forecast – we argue it's not the best way but can't see any negatives for smart meters
- **Questions.**
 - Is there a need for even stronger requirements on smart meter installations and suggestions for mechanisms?
 - Are there any reasons to support the use of smart meters for home energy usage?



THANK YOU FOR YOUR INPUT

Please send evidence or comments on our latest draft responses by the 22nd March. For more information, please contact your Group Lead or Amy Collins



View other live consultations and updates [here](#)