

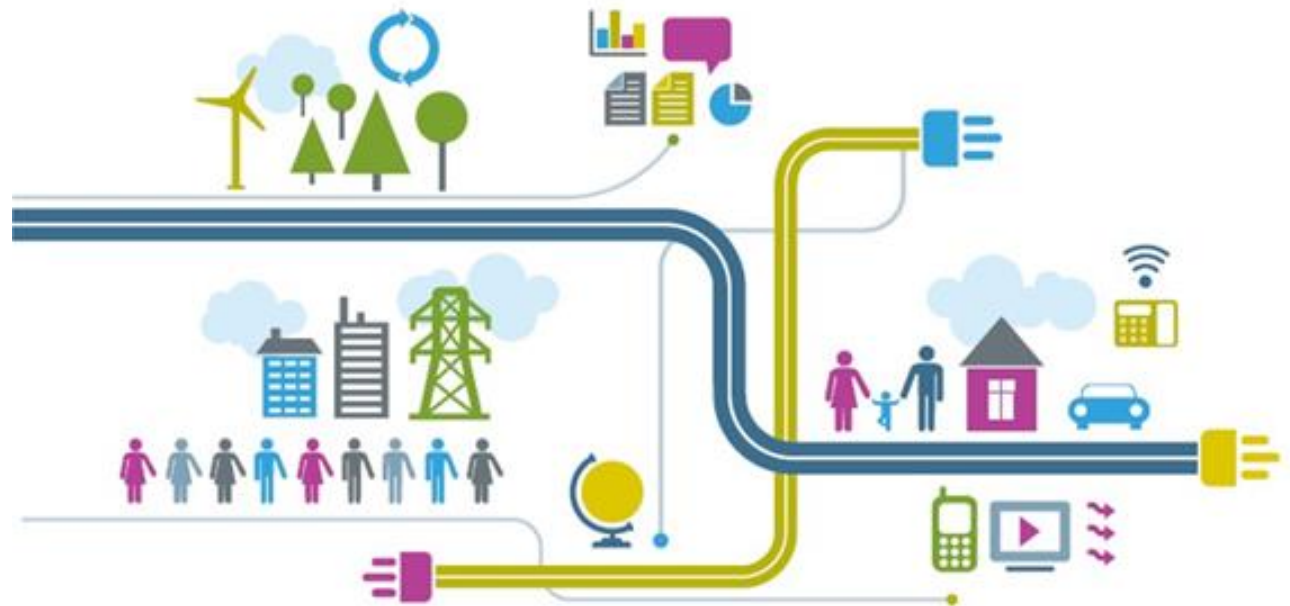
## An Introduction to BEAMA

Dr Howard Porter- BEAMA CEO

[howard.porter@beama.org.uk](mailto:howard.porter@beama.org.uk)

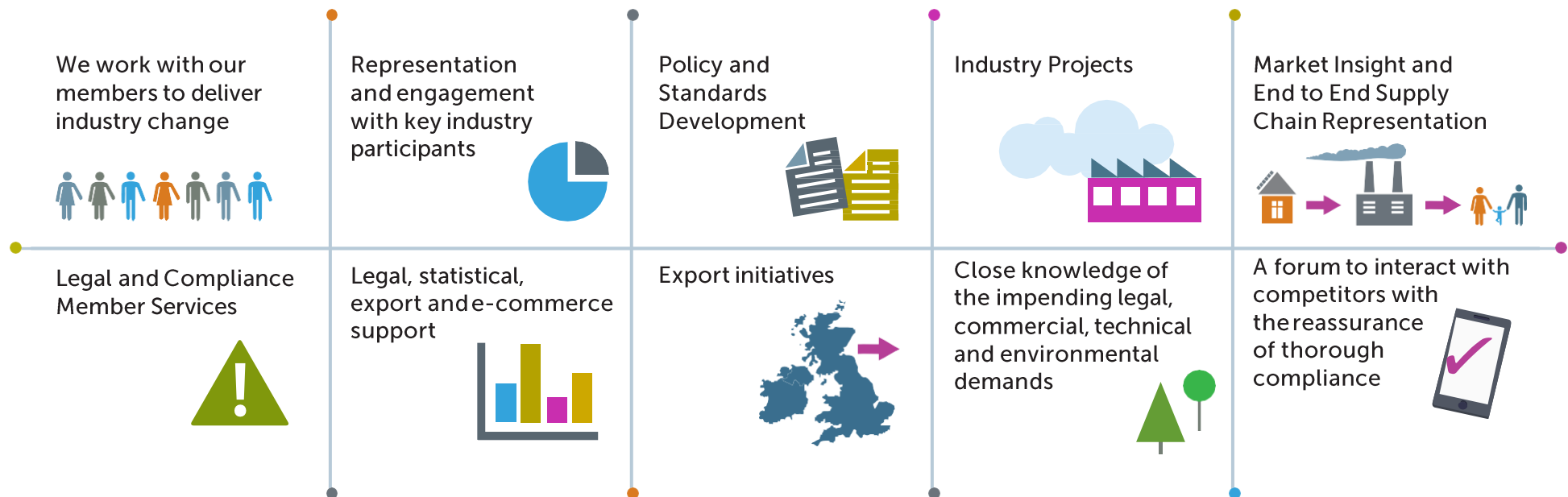
Colin Timmins – Direct of Member

Services [Colin.Timmins@beama.org.uk](mailto:Colin.Timmins@beama.org.uk)



## WHO WE ARE

BEAMA is a member association that represents manufacturers of electrical infrastructure products and systems, from transmission through distribution to the environmental systems and services in the built environment, with over 200 members ranging from SMEs to large multinationals. BEAMA member's products provide a sustainable, safe, efficient and secure UK electrical system. We support our members in ensuring that the UK has a strong electrotechnical industry that is recognised as an essential part of modern society and brings invaluable economic, social and environmental benefits.

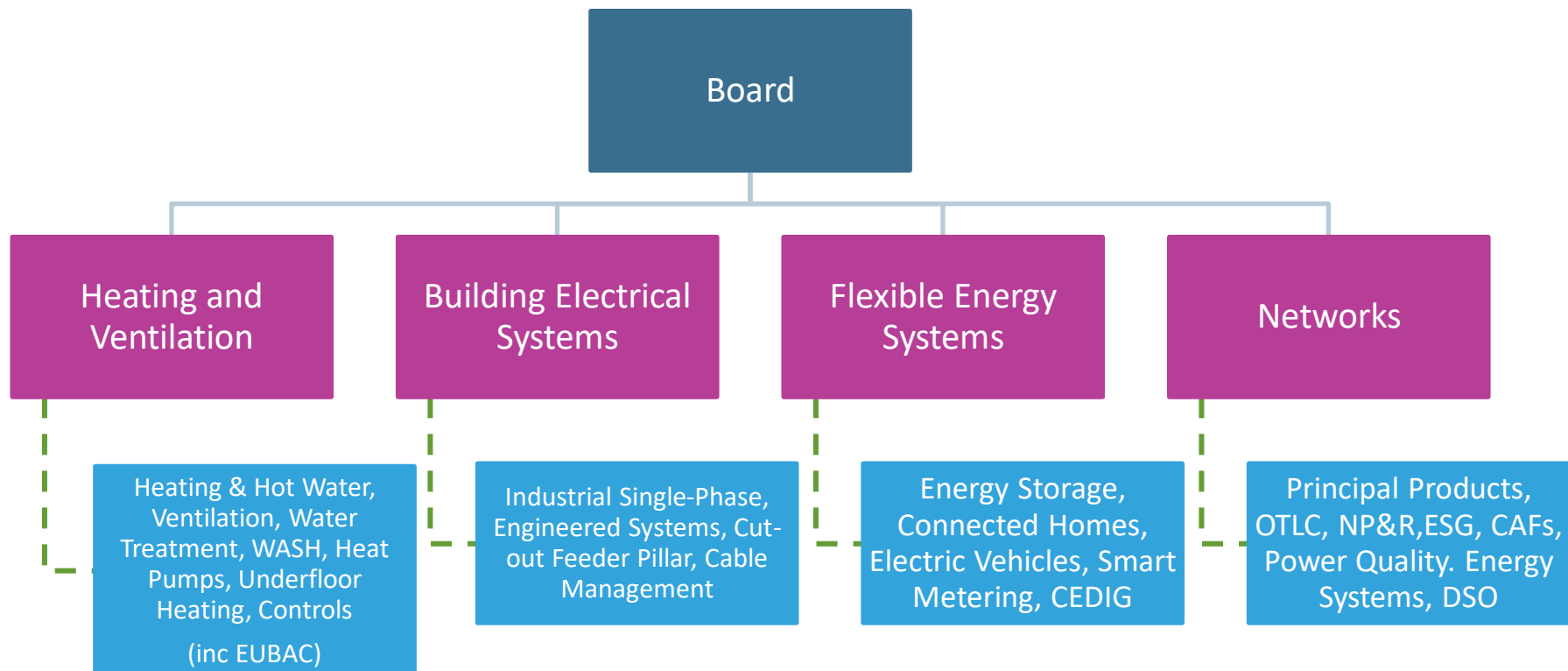


## WHAT WE DO

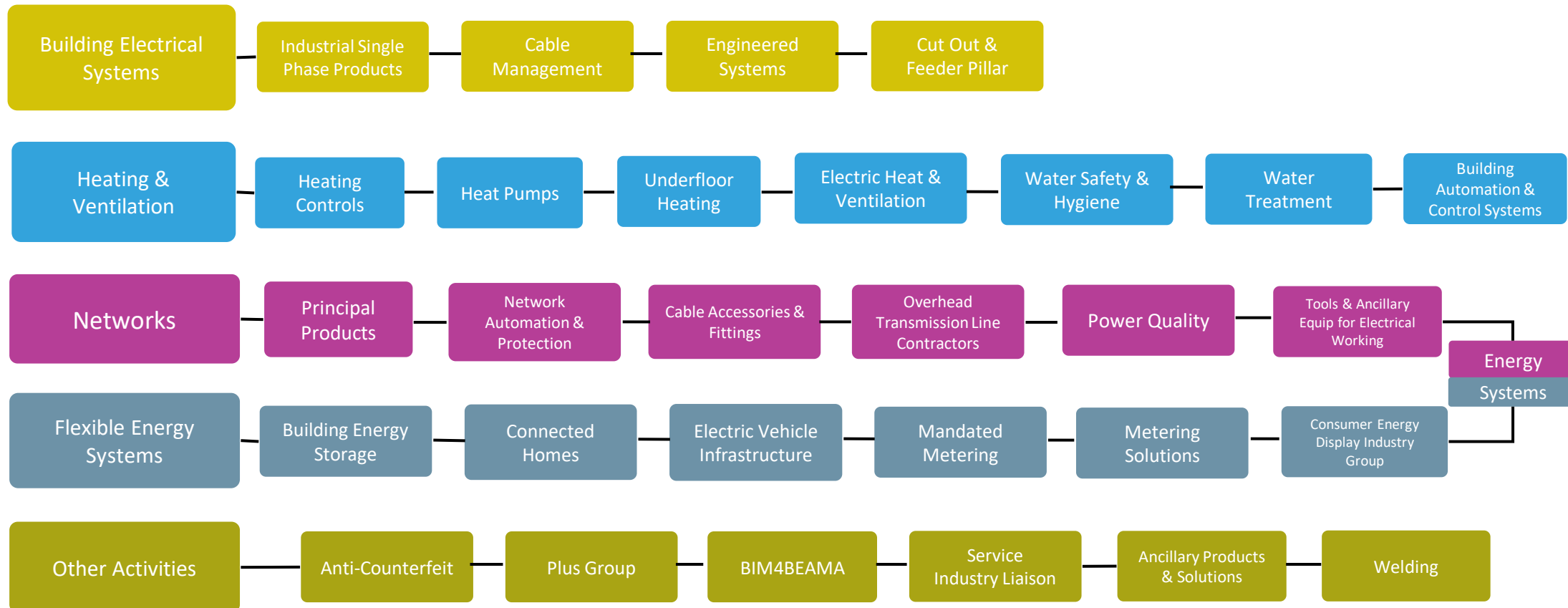


## BEAMA GOVERNANCE & STRUCTURE

BEAMA is a not for profit trade association with a Board of Directors made up of representatives of the member companies and key staff. Our activities are divided into 4 main interest sectors or portfolios: Heating & Ventilation; Building Electrical Systems; Flexible Energy Systems; Networks, these portfolios are managed by dedicated Portfolio Managers, and supported by Technical staff, EU and UK policy experts.



## PORTFOLIOS & PRODUCT GROUPS



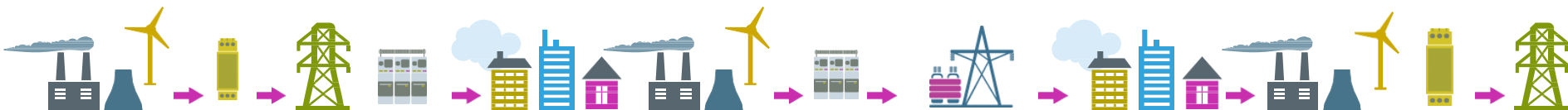
## THE BUILDING ELECTRICAL SYSTEMS PORTFOLIO

The Building Electrical Systems (BES) Portfolio consists of companies who are leading manufacturers of products associated with electrical distribution for the residential, commercial and industrial building segments. The groups that currently make up this Portfolio are: Cable Management Systems, House Service Cut-outs, Circuit Protection Devices, Enclosure Systems, including domestic consumer units, distribution boards and panel boards, L V Distribution Switchboards, Feeder Pillars, Busbar Trunking and Switch and Fuse-gear.

The BES portfolio is focused on supporting the development and maintenance of product standards at UK, EU and International levels via our active and experienced technical committees. BEAMA is also represented at JPEL/64, Electrical Installations of Buildings, which is the joint IET/BSI technical committee responsible for the maintenance and development of the UK wiring regulations. The groups regularly provide responses to government requests for support and consultations on subjects such as improving electrical safety.

Member companies are also working together across industry to support the implementation of digitalisation projects such as Building Information Management (BIM).

BEAMA members are updated regularly on new UK and EU policy information in order to help them to identify the changes that they need to make within their business to comply with new legislation. A current example of this is the forthcoming changes to the WEEE directive.



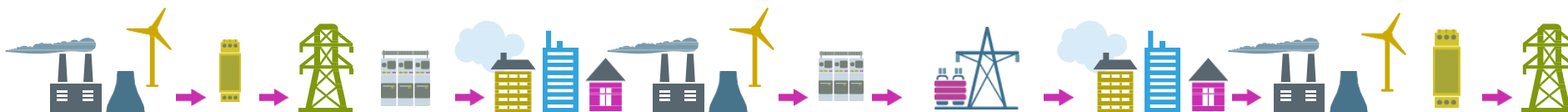
## HEATING & VENTILATION PORTFOLIO

The Heating & Ventilation (H&V) Portfolio represents manufacturers and suppliers of equipment for environmental systems within buildings; delivering comfort, efficiency and safety for occupants. The groups that currently make up this Portfolio are Domestic Heat Pumps, Electric Heating and Hot Water, Heating Controls, Underfloor Heating, Ventilation, Water Safety and Hygiene, Water Softeners, and Water Treatment.

The strategic direction and activities of each group is determined by its Management Committee, comprised of, and chaired by, member companies who also sit on relevant technical committees and specific task groups. Activities may be Government, industry or consumer facing but are always focussed on growing the market while supporting good practice and effective guidance.

The groups continue to be active in influencing Government policy with a specific focus on Building Regulations, building energy performance calculation methodologies, the Renewable Heat Incentive, Each Home Counts, and ongoing standardisation. They have also been prominent in driving Government action on effective regulation for hot water safety, installation of heating controls, and measures to improve indoor air quality, as well as establishing numerous training and installation standards.

Strong links and membership of related European associations has also allowed the groups to have a strong voice in the development of EU policy including Ecodesign, Energy Labelling, the Energy Performance of Buildings Directive, and the Energy Efficiency Directive. This ensures that the interests of UK industry are fully accounted for in the development of these Directives



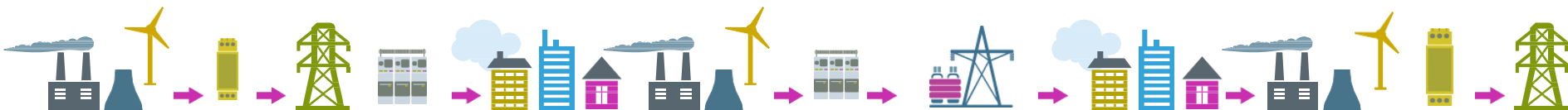
## NETWORKS PORTFOLIO

The Networks portfolio covers BEAMA manufacturers and providers of products for the Transmission and Distribution sector, including transformers, switchgear, network protection as well as electricity storage, smart grids and cybersecurity. Networks also covers related products and technology used in commercial, industrial and oil and gas sectors.

The Networks portfolio provides both proactive and reactive activities as agreed with members in the annual work programme. This includes technical services, publication of industry White Papers, representation with other stakeholders and full engagement with all relevant BSI Standardisation Committees.

Networks is well connected with BEIS, Ofgem, ENA, National Grid and Distribution Network Operators. Recently it has been working with the ENA to update their Protection Assessment process and is now representing members on the development of RIIO2.

The BEAMA Energy Systems Strategy Forum is included within the Networks membership and has been established to provide thought leadership for other BEAMA groups on the role of technology in the transformation of the GB energy systems.





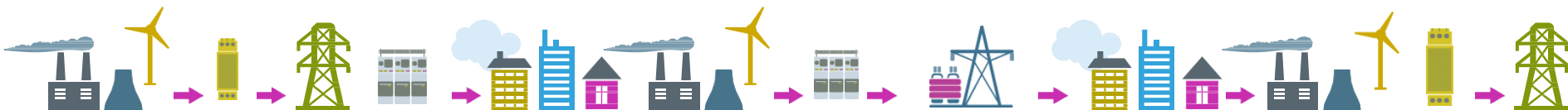
## FLEXIBLE ENERGY SYSTEMS PORTFOLIO

The Flexible Energy Systems (FES) Portfolio consists of 6 product groups: Mandated Smart Metering, Consumer Energy Display Industry Group, Metering Solutions Group, Connected Homes, Electric Vehicle Infrastructure and the Energy Storage in Buildings Group.

The Flexible Energy Systems product group members are committed to developing reliable behind-the-meter solutions to one of the great energy challenges we face: how to deliver a flexible energy system that provides the services such as heat and transport that people need at the times they need them, while managing the growing intermittency of supply that comes with the increasing levels of renewable generation.

Given the emphasis on developing markets, the Flexible Energy Systems portfolio focuses on new product and market legislation (EU and UK), developing technical standards and lobbying government on future policy and incentives to support market development. There is also significant support for developing export opportunities in these markets, and BEAMA's work as a trade partner with the UK government provides focused activity in this area.

The portfolio has close links with BEAMA Networks, Building Electrical Systems and Heating & Ventilation portfolios, with shared responsibility for the BEAMA Services Liaison Group and a shared focus on developments in energy systems and markets.



## POLICY & REGULATION

---

BEAMA has a dedicated team working to ensure our Industry has a strong voice in the development of UK and international policy and regulation. We work with all our product groups and sectors to ensure we can provide the evidence base for well positioned industry publications, consultation responses and market statistics. We track the development of existing and new regulation to help our members ensure compliance in the UK and abroad.

BEAMA has longstanding relationships with key Government departments and stakeholders in the UK and Internationally. Fundamental to our work is maintaining close working relationships with our European Trade Associations, which we will continue to do so post Brexit, ensuring a solid foundation for UK industry's influence in the setting of EU regulation.

We support BEAMA sectors in the development and delivery of cross industry campaigns, whether that's to influence new or existing regulation or policy, help drive investment into UK manufacturing or promote export opportunities.



## WHO WE ENGAGE WITH...

We have established collaborative and longstanding links with key industry policy makers and wider market participants within the UK and EU including..



## MEMBER BENEFITS– INFORMATION SERVICES, ANALYSIS AND INDUSTRY WORK

### Market Insight

Members of trade associations are increasingly looking for market insight based on statistics, industry trends and political outlook. BEAMA positions itself as an expert advisor to its members on market outlook across its range of represented sectors. This has resulted in members being able to focus R&D, marketing and general business strategy both in existing and emerging markets.



### Representation

BEAMA has very broad experience in manufacturer representation with particular emphasis on product legislation, standards and market surveillance. This provides essential background support for design and product development, which results in a range of high quality products complying with the latest international standards.

BEAMA has representation on over 300 external technical committees and working groups. This depth of influence allows Members to be involved at all stages of development of Policy and Standards.

## MEMBER BENEFITS– INFORMATION SERVICES, ANALYSIS AND INDUSTRY WORK



Coverage of UK and EU policy for all of BEAMA members

E.g. Brexit, cyber security, energy market design, Ofgem Significant Code Review, Circular Economy and Extended Producer Responsibility for Plastics, batteries and WEEE, Future of Heat, building regulations, SAP 10 implementation and SAP 11, smart EV charging policy, regulation and standards for smart appliances, Smart Systems and Flexibility Plan delivery and electrical safety and compliance

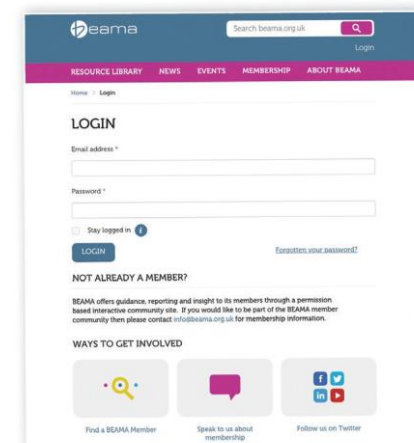
Engage with European Commission and Parliament via our EU trade associations Orgalime, T&D Europe, CAPIEL, Applia, CECAPI, EHPA...

### Members area

Private customised web area for BEAMA members covering horizontal, focussed and technology and committee specific work and information. This is open to all staff of member organisations on request.

### How we work with members

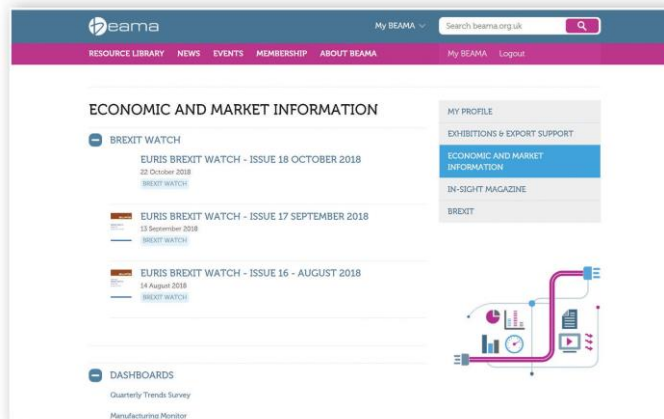
We work with members both directly to reflect specific business challenges and with all members on industry issues and projects.



## MEMBER BENEFITS— INFORMATION SERVICES, ANALYSIS AND INDUSTRY WORK

BEAMA Issues Forum – Policy, Regulation, Standards and much more

Detailed analysis and reporting in easily accessible format for all member staff. This includes key standards and policy developments, directives, regulation and advice on compliance.



Economic and Market Information

Brexit statistics

BEAMA indices

Market trends

Product specific data services e.g. Transformers

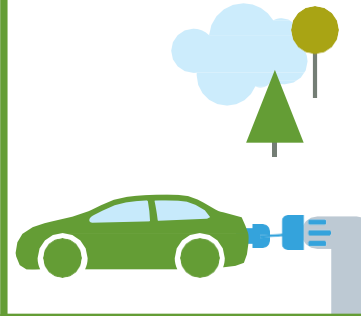
## BEAMA SUCCESSES AND HIGHLIGHTS OF 2018



Published Electrification by Design Series



Working with our members to deliver a number of responses to key industry consultations



Member of the Government's EV Energy Task Force and Associated Work Packages



Leadership role in developing Each Home Counts



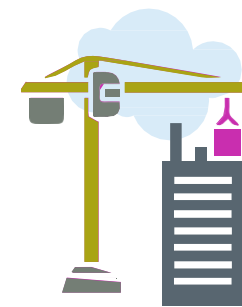
Established Senior Strategy Committee and launched New BEAMA Structure and Reporting Processes



Ensured our Member BREXIT views were represented at Industry Level



Representation on a number of key Industry Committees



Developments in Building Information Modelling (BIM)

## FURTHER INFORMATION

---

Dr Howard Porter

BEAMA CEO

[Howard.Porter@beama.org.uk](mailto:Howard.Porter@beama.org.uk)

Colin Timmins

Director of Member Services

[Colin.Timmings@beama.org.uk](mailto:Colin.Timmings@beama.org.uk)

