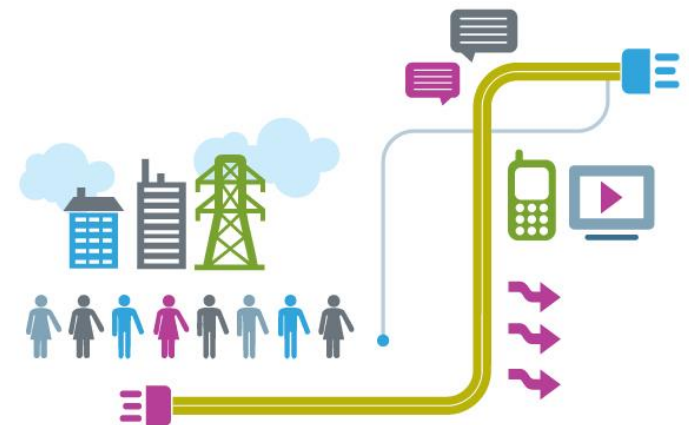


COVID-19 Survey

UPDATE

September 2020



Just over half of the companies had a lower level of employment in September than before the pandemic. These reductions were typically 10-15%, but we got no indication of the type of jobs that have been lost. There was no indication that local lockdowns were having any effect. BEAMA will get more detailed information on the overall employment impacts through its more regular industry monitoring service.

JOB LOSSES

WORKPLACE CHANGES

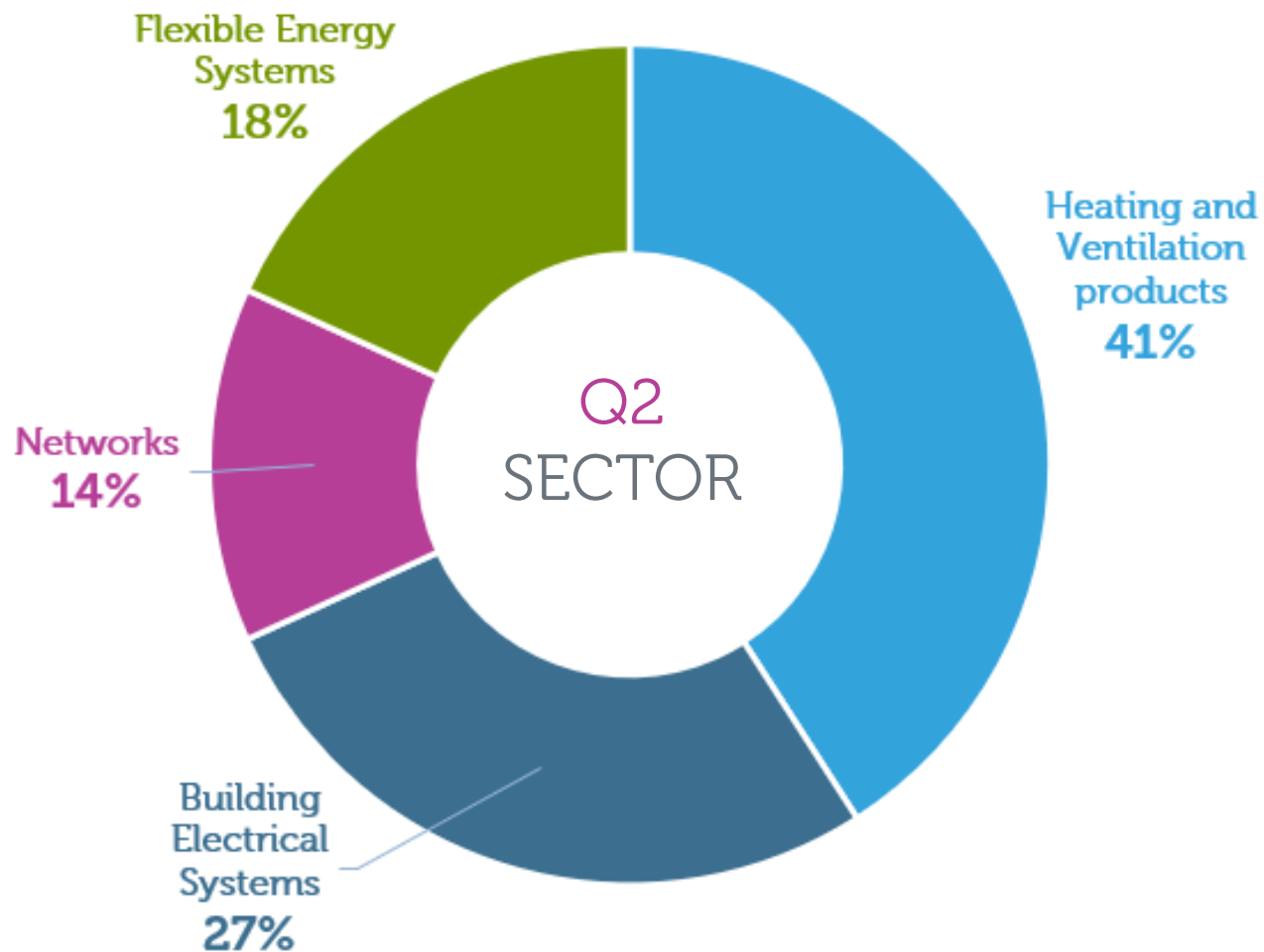
All companies had made some changes with the majority of office staff working from home, but warehouse and factory workers remaining at place of work, but under social distancing and CV19 compliant conditions. Some indications that smaller companies have found the new workplace restrictions more challenging than the larger companies.

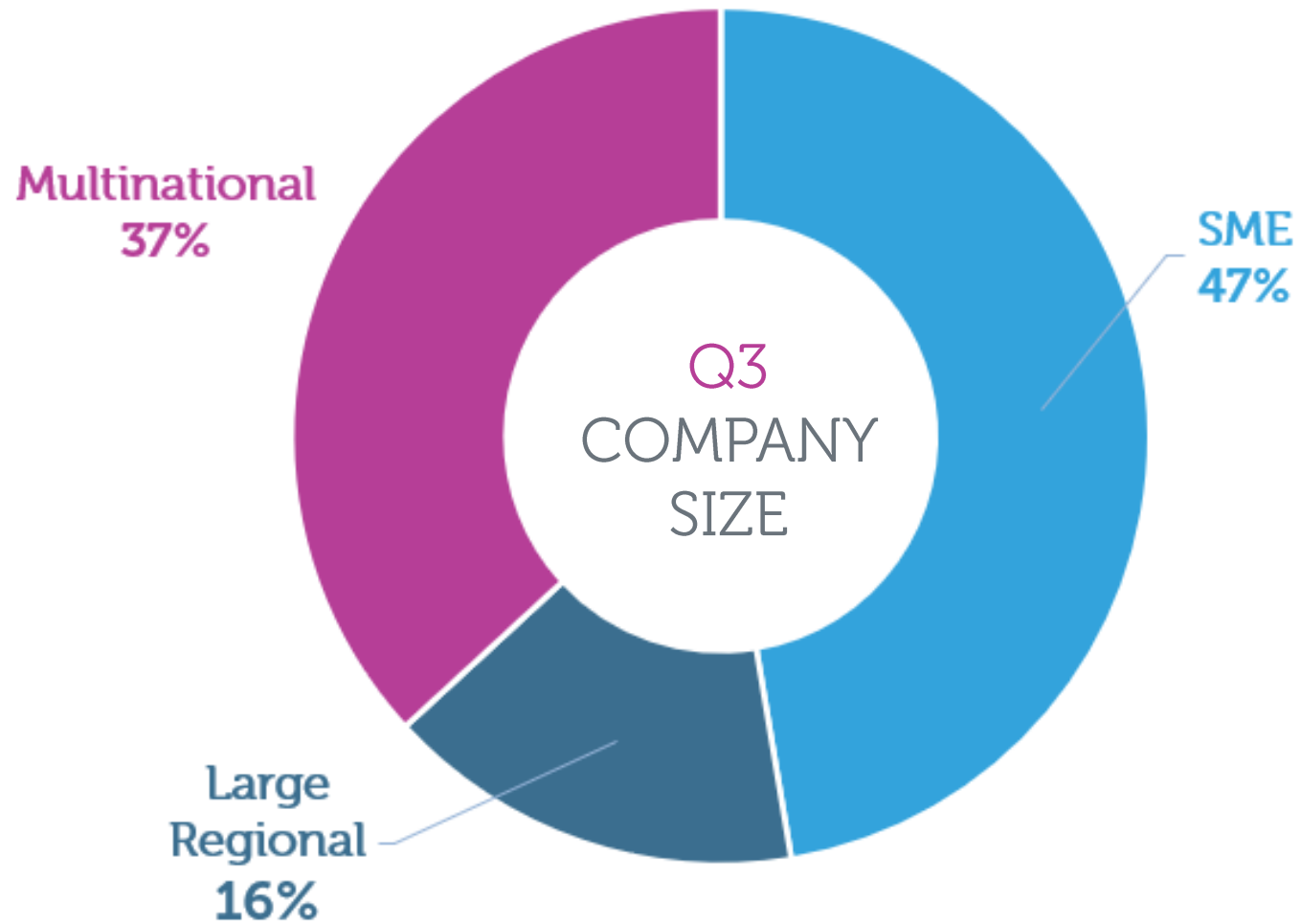
The effects of the pandemic on BEAMA companies' business activities varies considerably. Some 37% reported increases in business, either reflecting an immunity to the restrictions, and/or due to other non CV19 investments. The majority had seen reductions in business at levels between 10-20%, with indications that the lack of installers in all buildings related work and reductions in customer confidence were major factors.

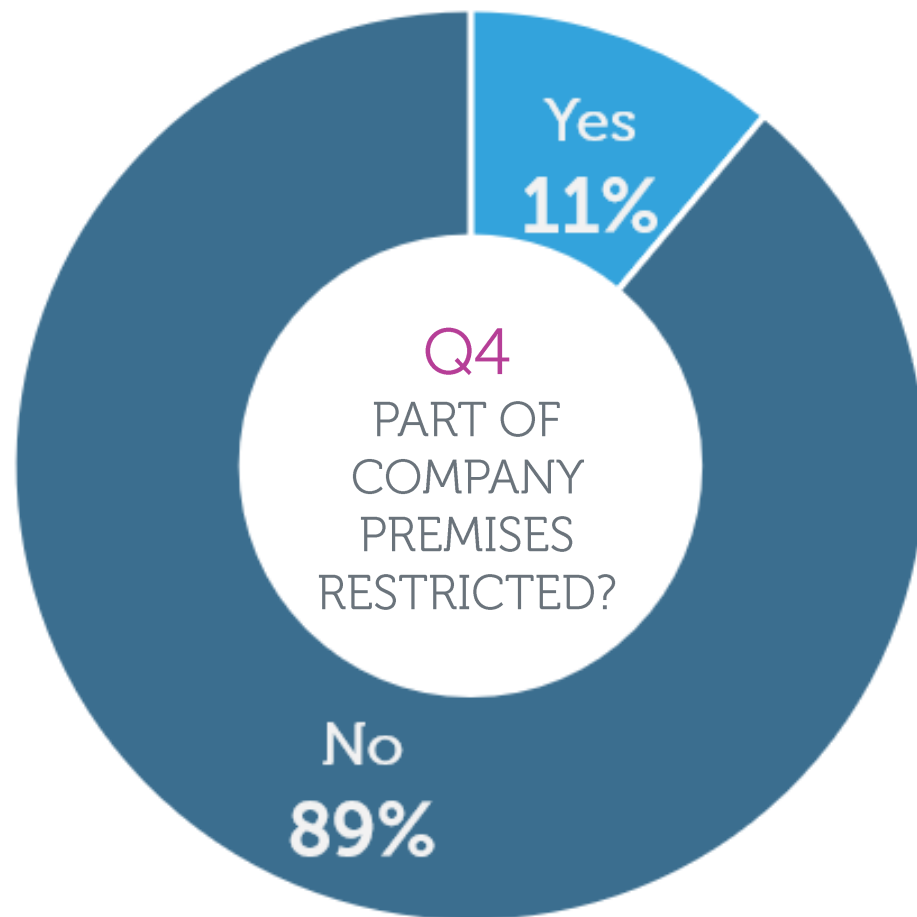
BUSINESS ACTIVITY

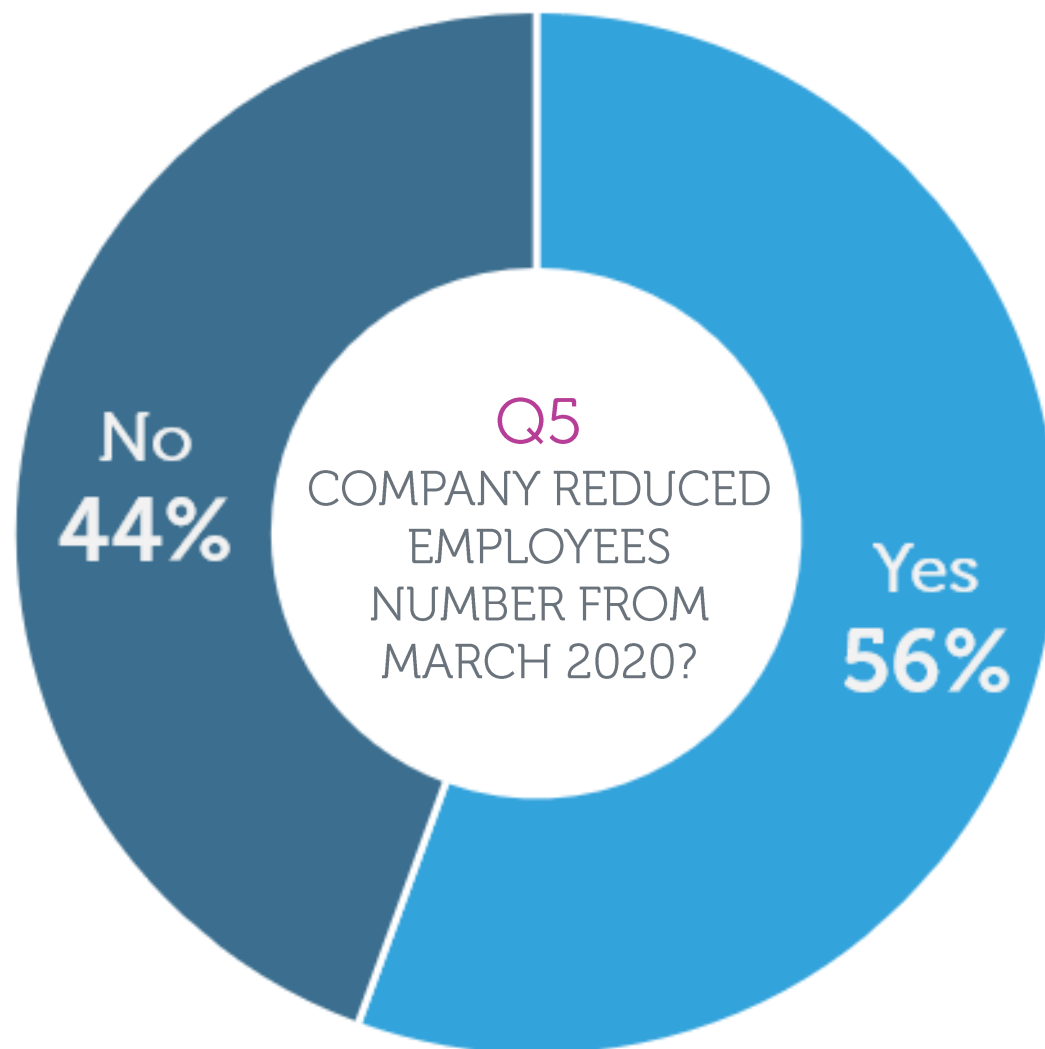
BEAMA RELATIONSHIP

All respondents felt that the BEAMA work on informing members on all aspects of CV19 policies was very valuable. Even those companies who felt they were already well informed appreciated the updates. Also, most companies felt that they had been able to keep up to date on other legislative changes, although some struggled to keep abreast of all the issues.



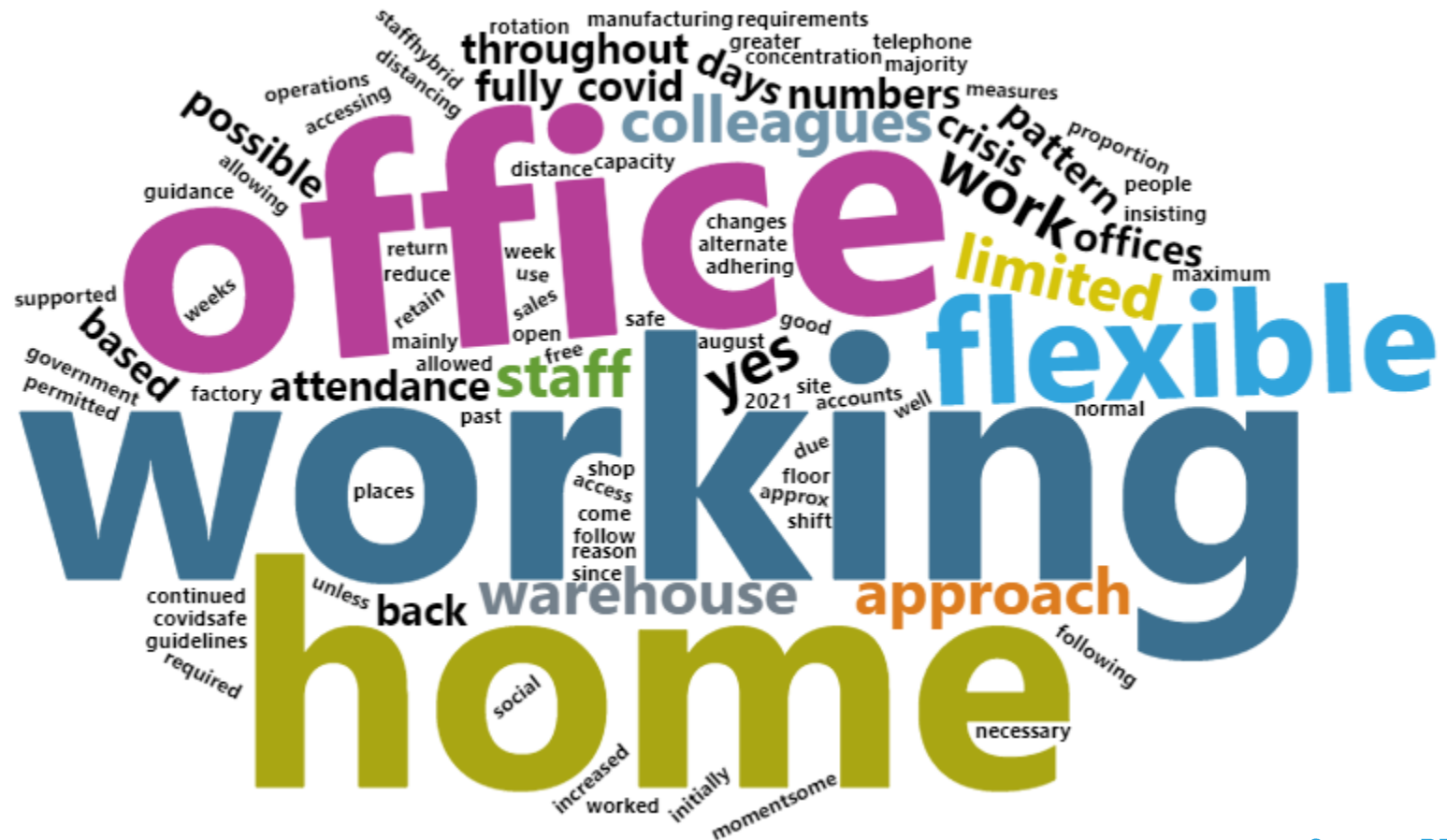




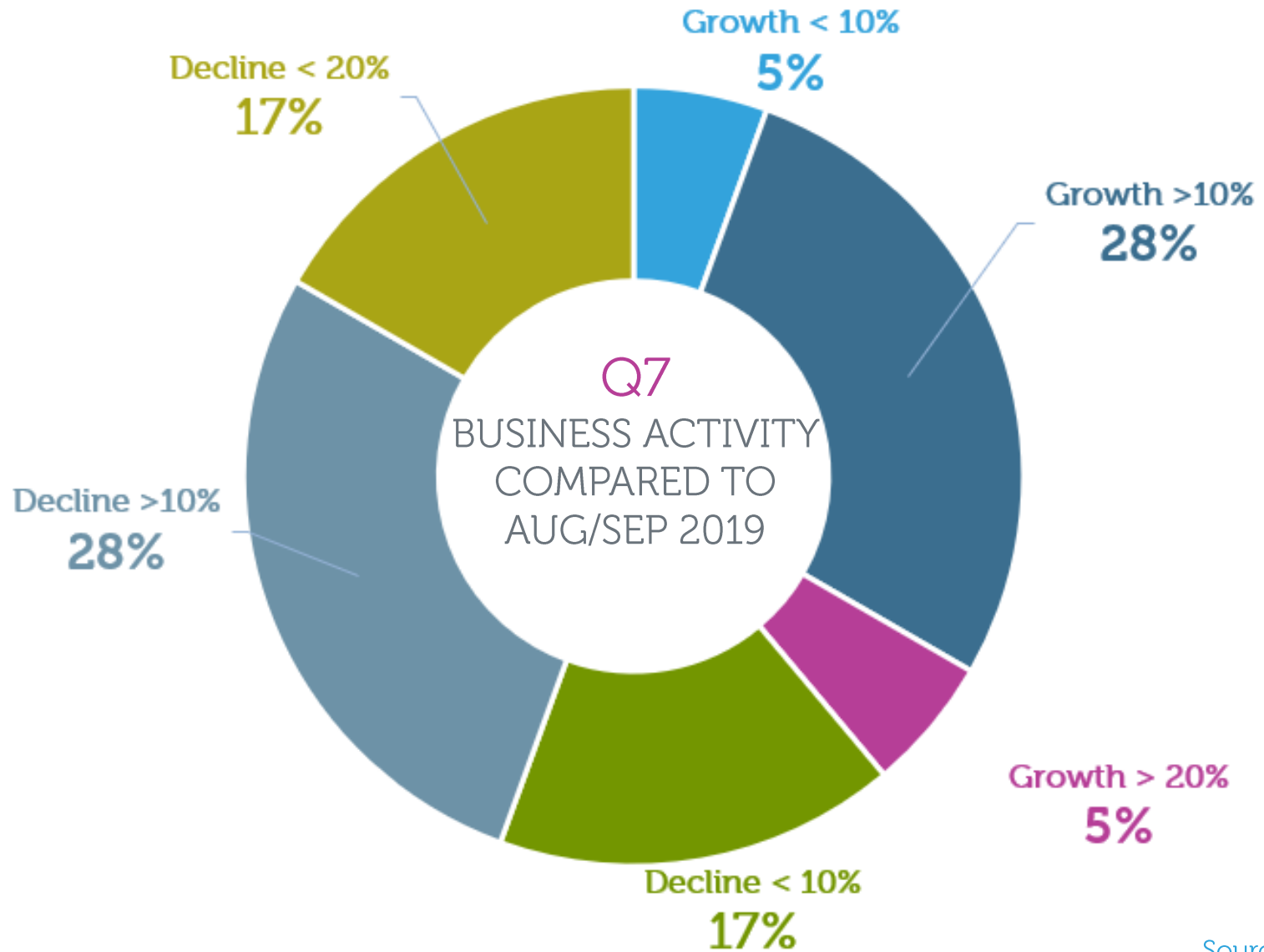


Q6

DUE TO COVID19, HAVE YOU INTRODUCED ANY NEW POLICIES FOR YOUR OFFICE STAFF?
(e.g. A flexible approach allowing home working and some attendance in the office, No return to offices)

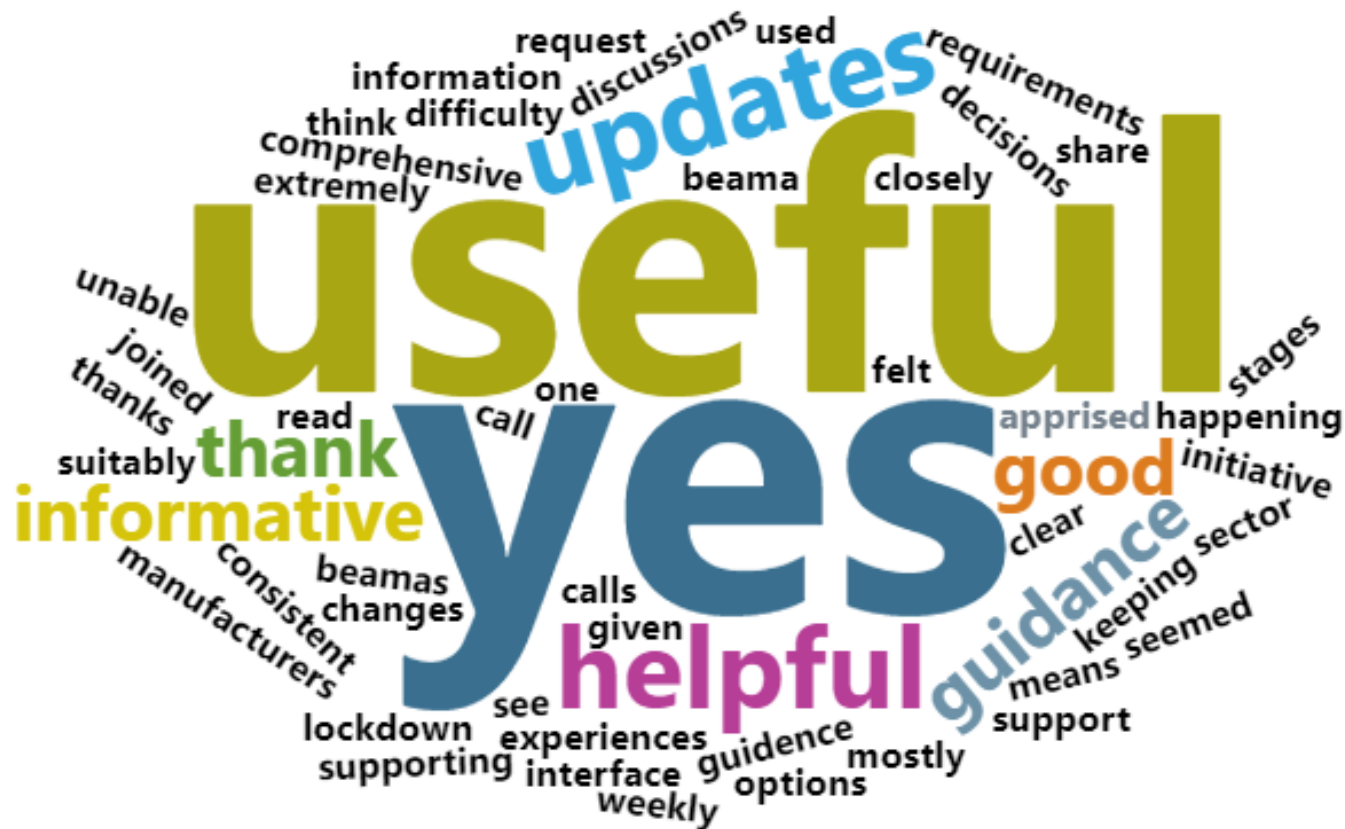


Source: BEAMA



Q8

DURING THE PANDEMIC BEAMA HAS BEEN ISSUING REGULAR GUIDANCE AND UPDATES TO OUR MEMBERS.
[PLEASE LET US KNOW IF YOU FOUND THESE USEFUL AND IF YOU HAVE ANY COMMENT]



HAS THE EFFECT OF COVID19 AFFECTED YOUR TRACKING OF LEGISLATION OR READING BEAMA UPDATES



Q10

ARE THERE ANY OTHER ISSUES RELATING TO CV19 YOU WOULD LIKE TO RAISE?



END

