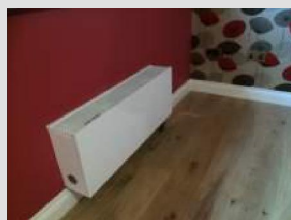


Refurbishment Detached and Semi-Detached homes "The Ship Inn" Oldbury-on-Severn, South Gloucestershire



Object description

Object type: Detached and Semi-Detached homes

Project type: Refurbishment

Year of construction: 2014

Residential and commercial area:
Matilda House (170.5m²) and Putcher House (151m²)

Installed appliances

WPL 25 AS

SBB 301 DHW Cylinder and SBP 100
Buffer Cylinder

Refurbishment Detached and Semi-Detached homes "The Ship Inn" Oldbury-on-Severn, South Gloucestershire

Architect

Installer

Ballam Renewable Heating Ltd
6 Argus Court
BS3 3PE Bristol
UK

Other information

'Ship Shape & Bristol Fashion' - Formerly a local village pub heated with oil, The Ship Inn has undergone an impressive transformation and modernisation. Now converted to two high specification four bedroom family homes, the new owners of the properties are benefitting from low running costs due to Stiebel Eltron's industry leading air to water heat pump technology. Teamed with under-floor heating, Jaga Strada DBE fan coil radiators, mechanical ventilation and heat recovery, and solar thermal collectors for domestic hot water heating, this development sets a benchmark for clean energy efficiency.