

# BEAMA Building Electrical Systems (BES)– NEW MEMBER PACK

## MEMBER SERVICES

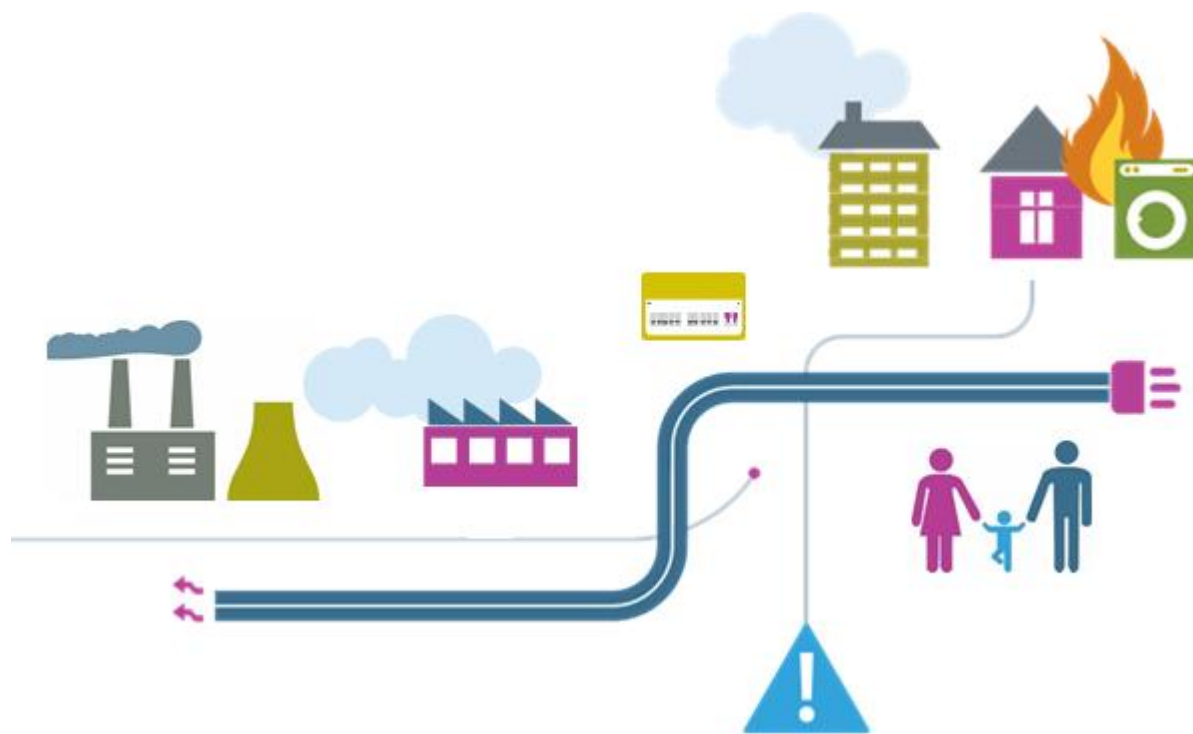
2019/20

Chris Pack

[chris.pack@beama.org.uk](mailto:chris.pack@beama.org.uk)

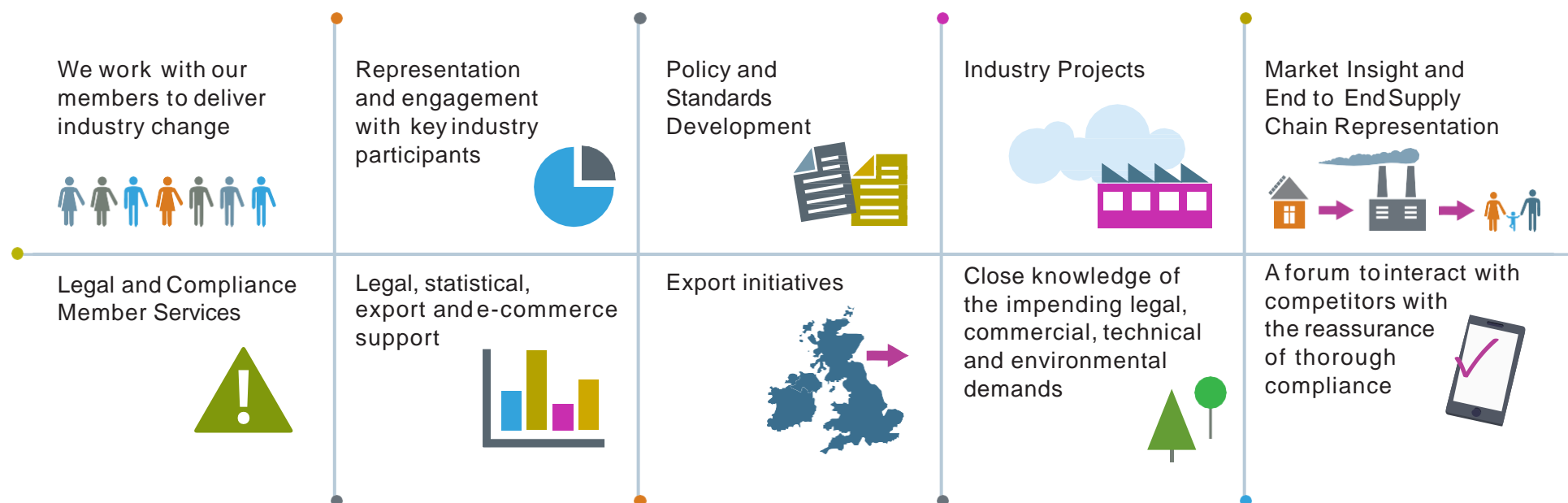
Raj Vagdia

[raj.vagdia@beama.org.uk](mailto:raj.vagdia@beama.org.uk)



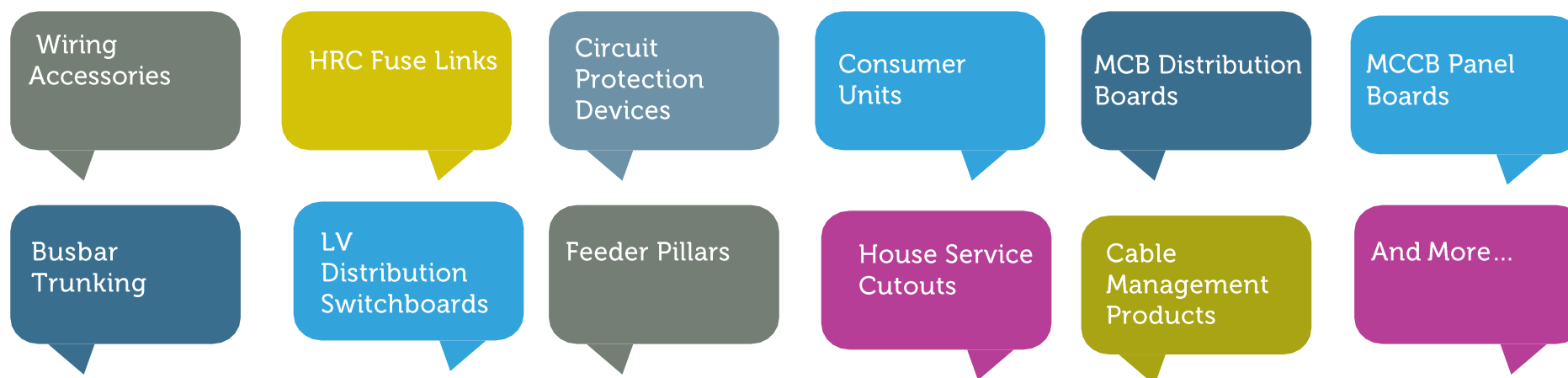
## WHO WE ARE AND WHAT WE DO

BEAMA is a member association that represents manufacturers of electrical infrastructure products and systems, from transmission through distribution to the environmental systems and services in the built environment, with over 200 members ranging from SMEs to large multinationals. BEAMA member's products provide a sustainable, safe, efficient and secure UK electrical system. We support our members in ensuring that the UK has a strong electrotechnical industry that is recognised as an essential part of modern society and brings invaluable economic, social and environmental benefits.



## BEAMA BUILDING ELECTRICAL SYSTEMS (BES)

BEAMA Building Electrical Systems members are manufacturers of products for the residential, commercial and industrial buildings sector, including:



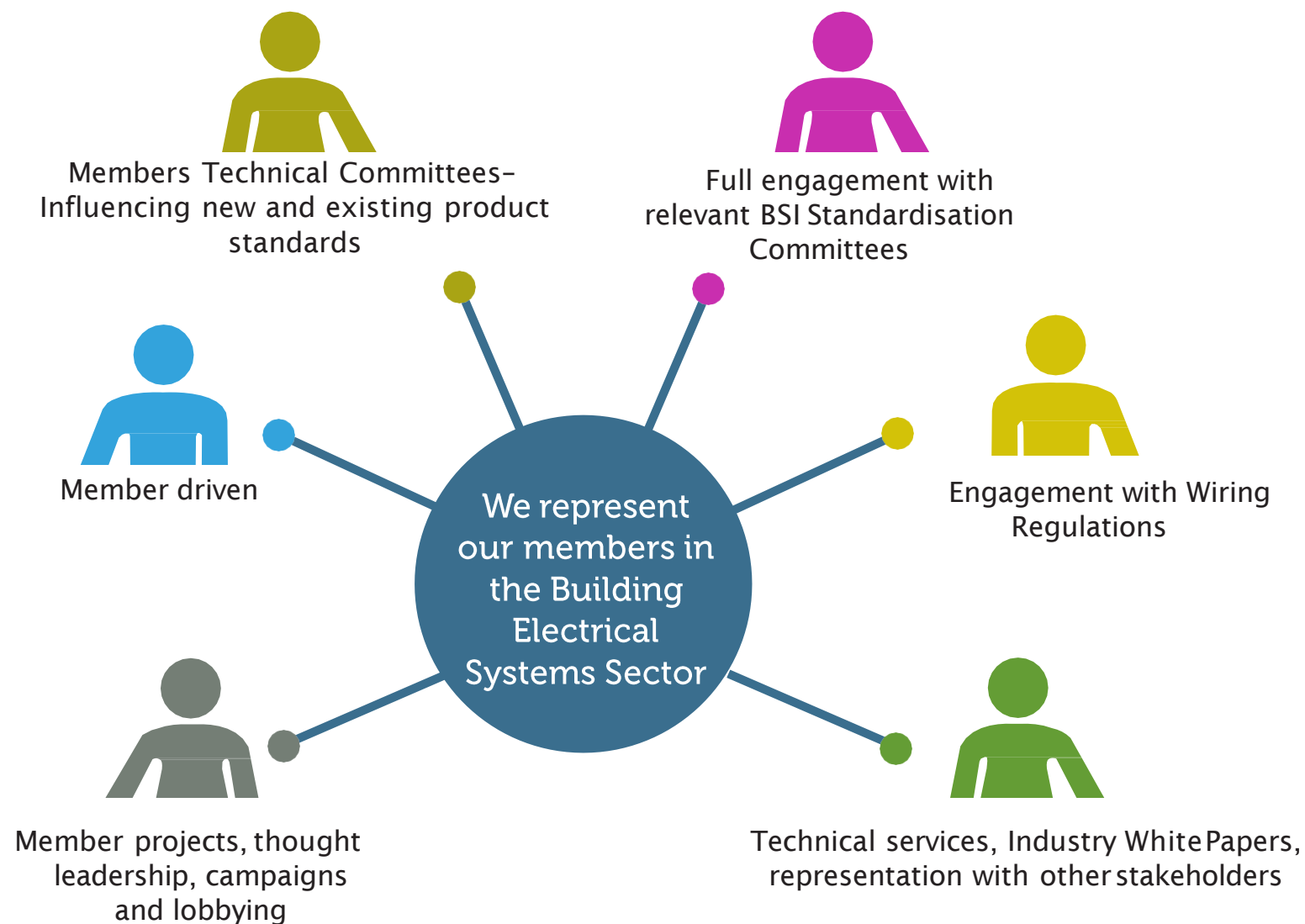
Membership of the group is open to companies who manufacture relevant products and who have an established presence in the UK market.



# BEAMA BUILDING ELECTRICAL SYSTEMS COMMITTEES AND STRUCTURE



## BEAMA BES – MEMBERS SERVICES



## BEAMA BES – MEMBERS SERVICES

We have cross supply chain links beyond Building Electrical Systems products to Networks and Flexible Energy Systems including electric vehicle infrastructure, battery energy storage and the connected homes groups.

We represent over 200 manufacturers and technology providers across the energy supply chain including Energy Systems and Heating and Ventilation systems. BEAMA is well positioned to assist members in dealing with the cross sector challenges of digitalisation and energy system change.



### Our role is to inform members and influence policy

We provide quarterly briefings, web information services and meetings.

We offer thought leadership, coordinate position papers, campaigns, consultation responses and policy engagement and influence.



## MY BEAMA – INFORMATION SERVICES, ANALYSIS AND INDUSTRY WORK



### Coverage of UK and EU policy for all of BEAMA members

Key UK policy areas are smart systems and flexibility, cyber security, electrification, safety. We engage with BEIS, OPSS, Ofgem, DEFRA, Transport, NCSC, HCLG, DCMS, DExEU, DIT and other key stakeholders in government and across industry including the ECA, NAPIT, Certsure, NICEIC, SELECT, Electrical Safety First, AMDEA and the EDA.

Key current policy areas are Brexit, Clean Energy Package (Energy Efficiency Directive & electricity market regulations), cyber security, environmental, electrical safety and building regulations.

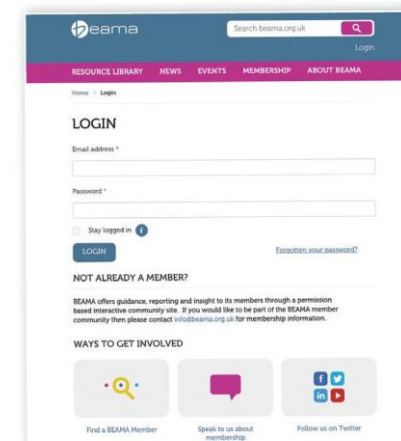
Engage with European Commission and Parliament via Orgalime, T&D Europe, CAPIEL, Applia, CECAPI, EHPA...

### Members area

Private customised web area for BEAMA members covering horizontal, focussed and technology and committee specific work and information. This is open to all staff of member organisations on request.

### How we work with members

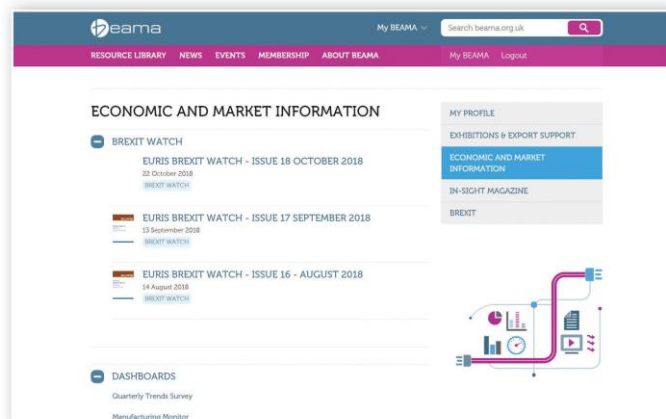
We work with members both directly to reflect specific business challenges and with all members on industry issues and projects.



## MY BEAMA – INFORMATION SERVICES, ANALYSIS AND INDUSTRY WORK

BEAMA Issues Forum – Policy, Regulation, Standards and much more

Detailed analysis and reporting in easily accessible format for all member staff. This includes key standards and policy developments, directives, regulation and advice on compliance.



Economic and Market Information


Brexit statistics

BEAMA indices

Market trends

Product specific data services e.g. Single phase products

# BUILDING ELECTRICAL SYSTEMS RECENT SUCCESSES



Product Guides published to coincide with the launch of the 18<sup>th</sup> Edition Wiring Regulations




Published Electrical Safety in Dwellings White paper recommending 5 yearly mandatory inspections



Identified 14000 non-compliant wiring accessories installed on a major UK off-site construction project resulting in them being removed and replaced by compliant BEAMA member products



Increased compliance activities including product testing covering consumer units, socket outlets and fused connection units



Delivered a variety of Product and technical bulletins.



Product Safety Checklist Document Covering Circuit Protection Products



Influenced Wiring Regulations to Increase Safety of Installations BS 7671



Widespread engagement in the full scope of Building Information Modelling (BIM) development activities at both UK and EU level

## WHO WORKS WITH US ALREADY...



## WHO BEAMA BUILDING ELECTRICAL SYSTEMS ENGAGE WITH...

We have established collaborative and longstanding links with key Building Electrical Systems policy makers and wider market participants including...



E [raj.vagdia@beama.org.uk](mailto:raj.vagdia@beama.org.uk)

