

BEAMA NETWORKS – NEW MEMBER PACK

MEMBER SERVICES

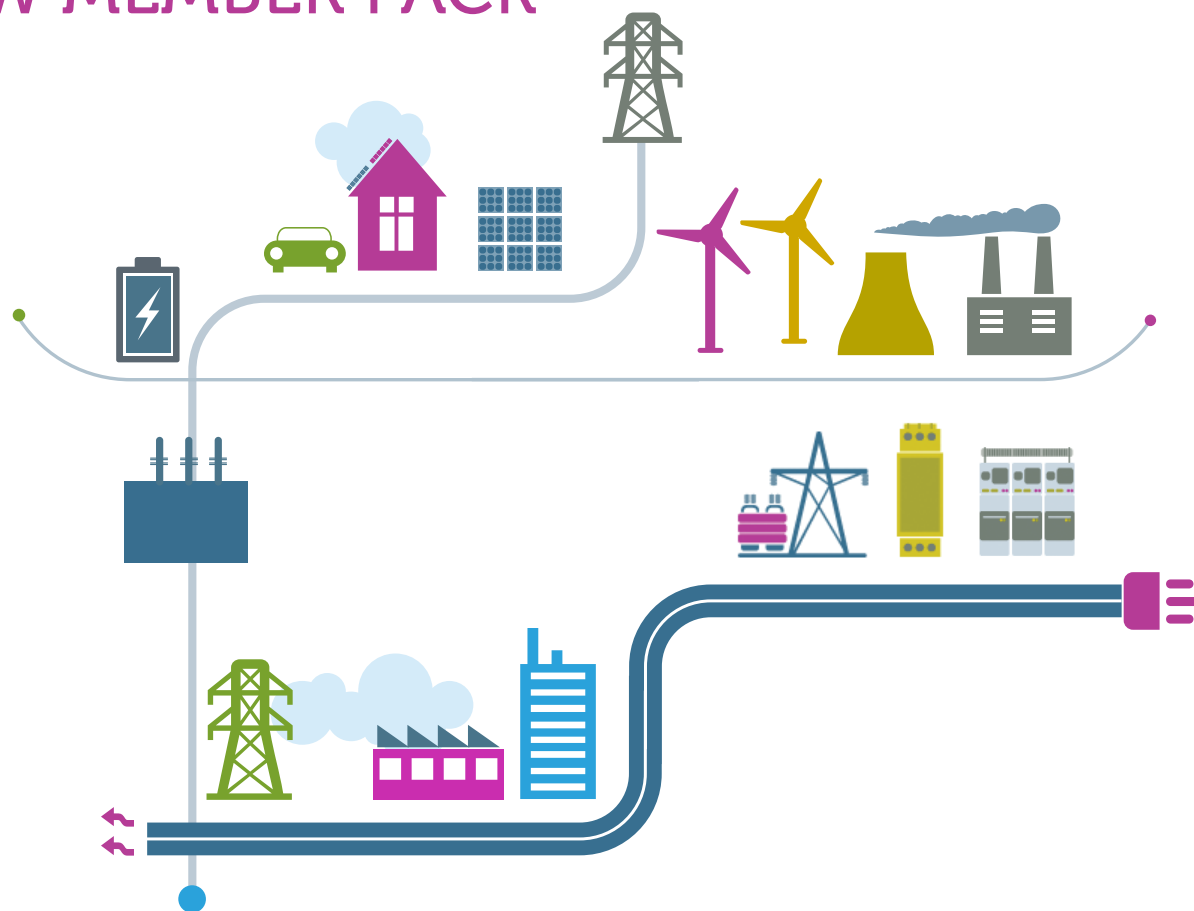
2018/19

Anthony Bivens

anthony.bivens@beama.org.uk

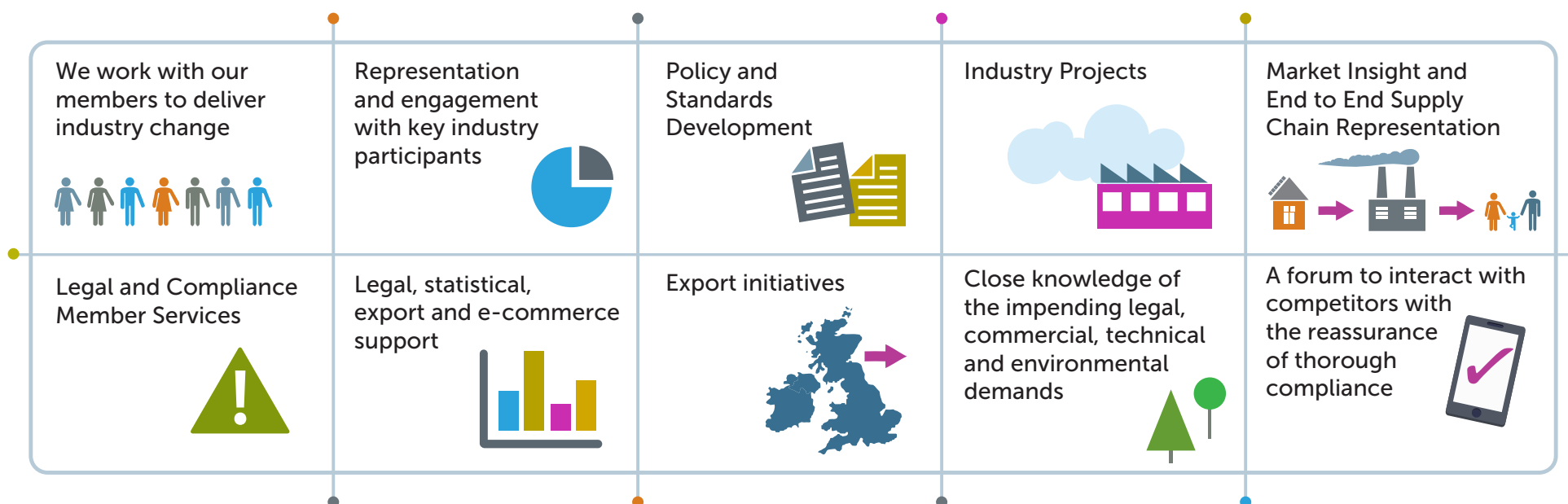
John Parsons

john.parsons@beama.org.uk



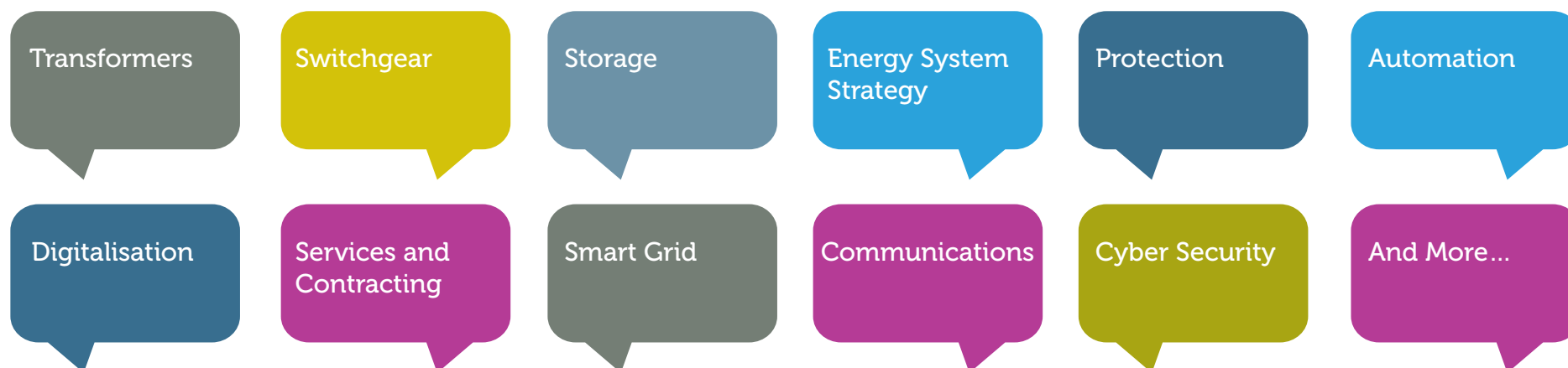
WHO WE ARE AND WHAT WE DO

BEAMA is a member association that represents manufacturers of electrical infrastructure products and systems, from transmission through distribution to the environmental systems and services in the built environment, with over 200 members ranging from SMEs to large multinationals. BEAMA member's products provide a sustainable, safe, efficient and secure UK electrical system. We support our members in ensuring that the UK has a strong electrotechnical industry that is recognised as an essential part of modern society and brings invaluable economic, social and environmental benefits.

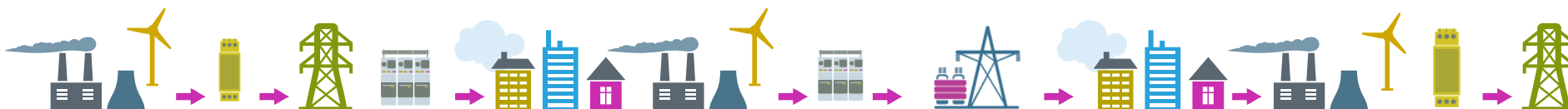


BEAMA NETWORKS

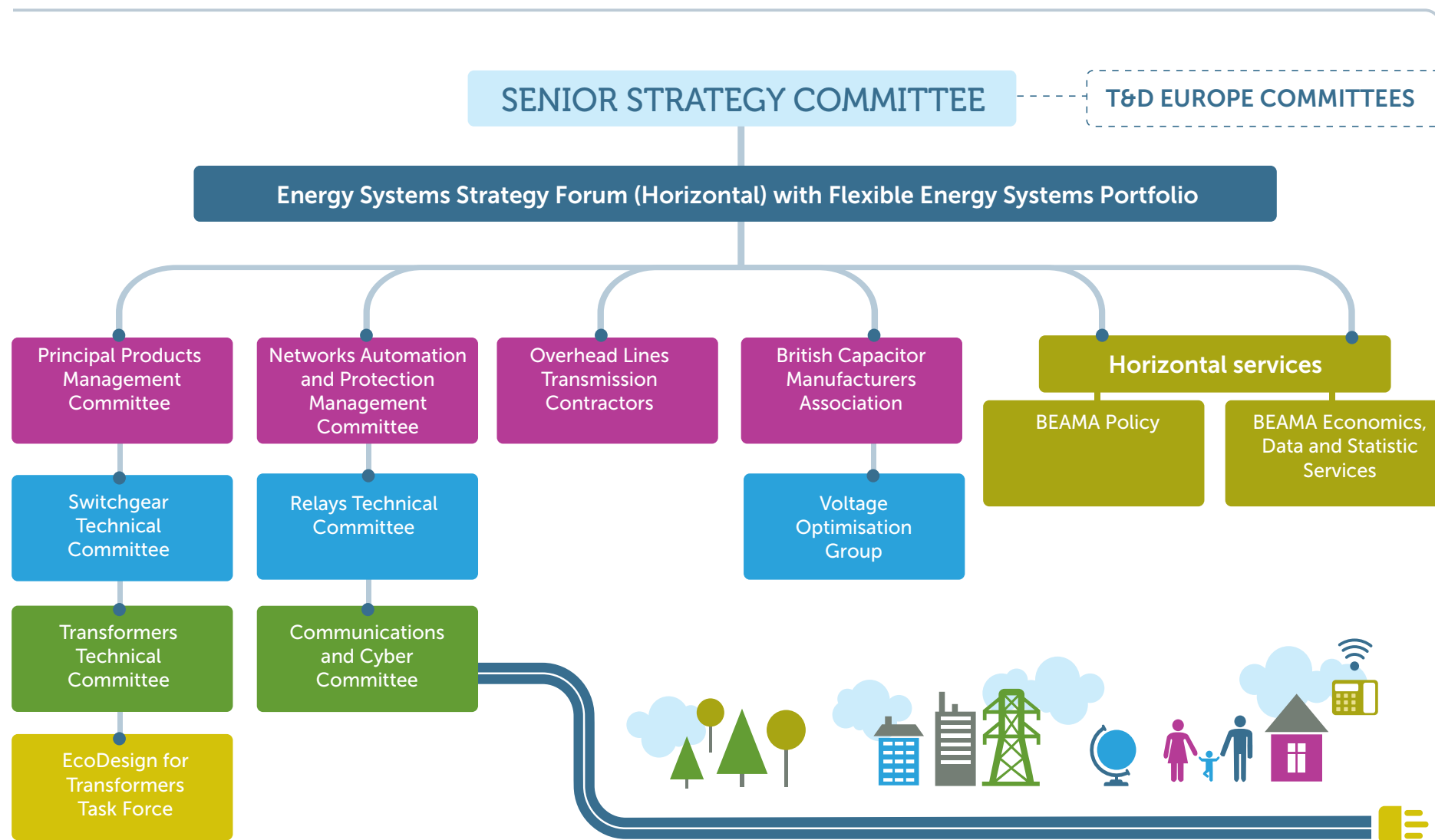
BEAMA Networks members are manufacturers and providers of products for the Transmission and Distribution sector, including:



Membership of the group is open to companies with a UK presence who develop, manufacture or supply products or services to the T&D Sector, as well as related products and technology used in the commercial, industrial and oil and gas sectors.



BEAMA COMMITTEES AND STRUCTURE



BEAMA NETWORKS – MEMBERS SERVICES



BEAMA NETWORKS – MEMBERS SERVICES

We have cross supply chain links beyond the networks including electric vehicles, flexibility etc.

We represent over 200 manufacturers and technology providers across the energy supply chain including Energy Systems, Heat and Vent and building electrical systems. BEAMA is well positioned to assist members in dealing with the cross sector challenges of digitalisation and energy system change.



Energy Systems Strategy Forum

Free access to Energy Systems Strategy Forum for BEAMA Networks Members.

Our role is to inform members and influence policy

We provide quarterly briefings, web information services and meetings.

We offer thought leadership, coordinate position papers, campaigns, consultation responses and policy engagement and influence.



MY BEAMA – INFORMATION SERVICES, ANALYSIS AND INDUSTRY WORK



Coverage of UK and EU policy for all of BEAMA members

Key UK policy areas are smart systems and flexibility, cyber security, electrification, safety. We engage with BEIS, Ofgem, DEFRA, Transport, NCSC, HCLG, DCMS, DExEU, DIT and other key stakeholders in government and across industry.

Key current policy areas are Brexit, Clean Energy Package (Energy Efficiency Directive & electricity market regulations), cyber security

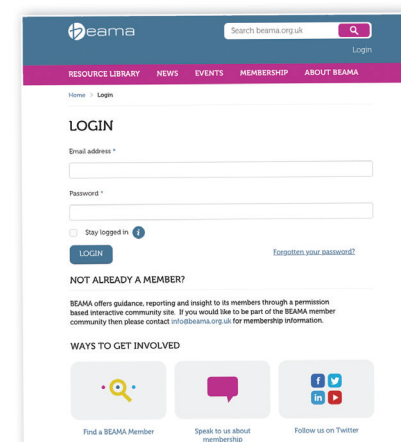
Engage with European Commission and Parliament via Orgalime, T&D Europe, CAPIEL, Applia, CECAPI, EHPA...

Members area

Private customised web area for BEAMA members covering horizontal, focussed and technology and committee specific work and information. This is open to all staff of member organisations on request.

How we work with members

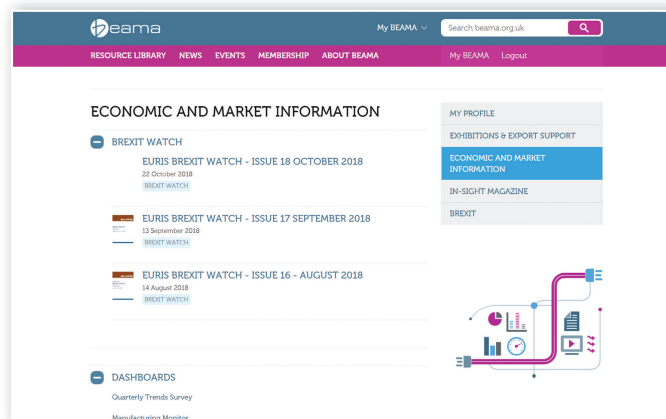
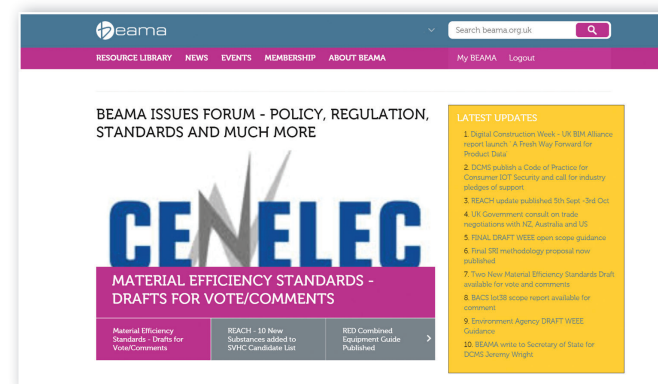
We work with members both directly to reflect specific business challenges and with all members on industry issues and projects.



MY BEAMA – INFORMATION SERVICES, ANALYSIS AND INDUSTRY WORK

BEAMA Issues Forum – Policy, Regulation, Standards and much more

Detailed analysis and reporting in easily accessible format for all member staff. This includes key standards and policy developments, directives, regulation and advice on compliance.



Economic and Market Information

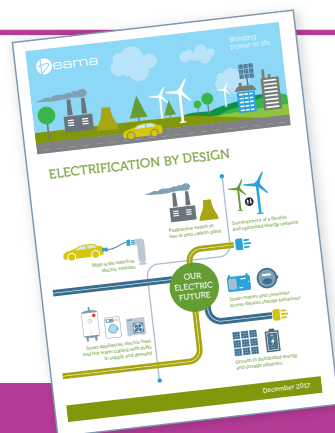
Brexit statistics

BEAMA indices

Market trends

Product specific data services e.g. Transformers

NETWORKS SUCCESSES IN 2017



Published Electrification by Design Series



Published a Series of Technical Reports



Energy Networks Association (ENA) Assessment Panels Engagement and Development



Leadership role in developing Each Home Counts



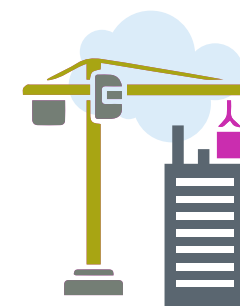
Established Senior Strategy Committee and launched New BEAMA Structure and Reporting Processes



TDE Commodities Indices, Tier 2 review



Representation on a number of key Industry Energy Committees



Developments in Building Information Modelling (BIM)

NETWORKS 2018/19 DELIVERY PLAN HIGHLIGHTS



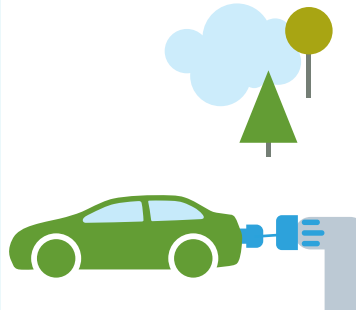
Launched BEAMA Campaign for Supply Chain Recognition



Deliver Additional Reports in Electrification by Design Series

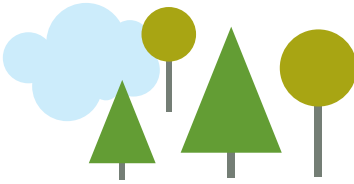


Recognised stakeholder for the RIIO 2 development process and consultations



Member of the Governments EV Energy Task Force and Associated Work Packages

Open Networks



Advisors to Open Networks Project, Power Responsive and other Industry Fora



Deliver reflections on Eco Design, Standards Reporting Improvements and further Technical Papers



Ensure Member BREXIT views are represented at Industry Level



Lead industry work with Government and regulators to deliver future energy system

WHO BEAMA NETWORKS ENGAGE WITH...

We have established collaborative and longstanding links with key energy sector policy makers and wider market participants including...



WHO WORKS WITH US ALREADY...



FURTHER INFORMATION

Anthony Bivens

BEAMA Networks

T 07788 292 842

E anthony.bivens@beama.org.uk

John Parsons

BEAMA Networks

T 0 7966 650 554

E john.parsons@beama.org.uk

